

HOUSE OF BIOHEALTH

05 AVRIL 2011

LOCALISATION - LOCATION

LE "HOUSE OF BIOHEALTH" SE SITUE À PRÈS DE 1500 MÈTRES DU FUTUR SITE DU CAMPUS DE BELVAL DE L'UNIVERSITÉ DE LUXEMBOURG, COMPRENANT NOTAMMENT LA MAISON DU SAVOIR, LA MAISON DE LA VIE, LA MAISON DE L'INNOVATION AINSI QUE LE « LUXEMBOURG CENTER OF SYSTEMS BIOLOGY » (LCSB).

LE FUTUR CAMPUS DE BELVAL RÉUNIRA LES UNITÉS DE RECHERCHE PUBLIQUE EN MATIÈRE DES SCIENCES DE LA VIE, CRÉANT DE LA SORTE LES CENTRES DE COMPÉTENCES NÉCESSAIRES AU DÉVELOPPEMENT D'ACTIVITÉS ÉCONOMIQUES DANS LE CADRE DE LA POLITIQUE VOLONTARISTE DU GOUVERNEMENT.

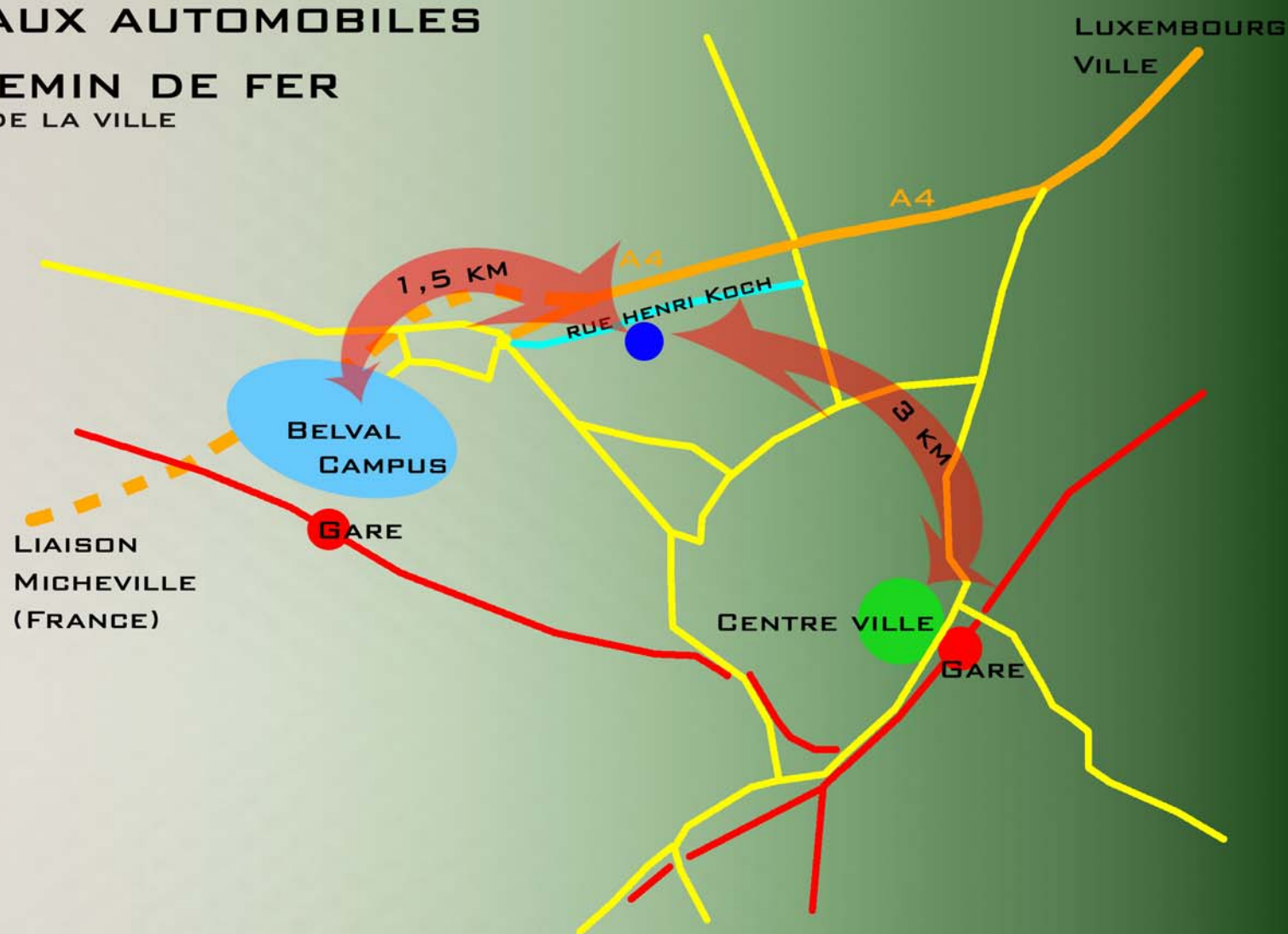
THE « HOUSE OF BIOHEALTH » IS LOCATED AROUND 1500 METERS FROM THE FUTURE SITE OF BELVAL CAMPUS FROM THE UNIVERSITY OF LUXEMBOURG, INCLUDING THE HOUSE OF KNOWLEDGE, THE HOUSE OF THE LIFE, THE HOUSE OF THE INNOVATION, WITH THE « LUXEMBOURG CENTER OF SYSTEMS BIOLOGY » (LCSB).

THE FUTURE CAMPUS OF BELVAL WILL BRING TOGETHER THE PUBLIC RESEARCH UNITS IN THE FIELD OF LIFE SCIENCES, THEREBY CREATING CENTERS OF COMPETENCES NEEDED TO DEVELOP ECONOMIC ACTIVITIES IN THE CONTEXT OF THE DELIBERATED POLICY OF THE GOVERNMENT.

PAYS





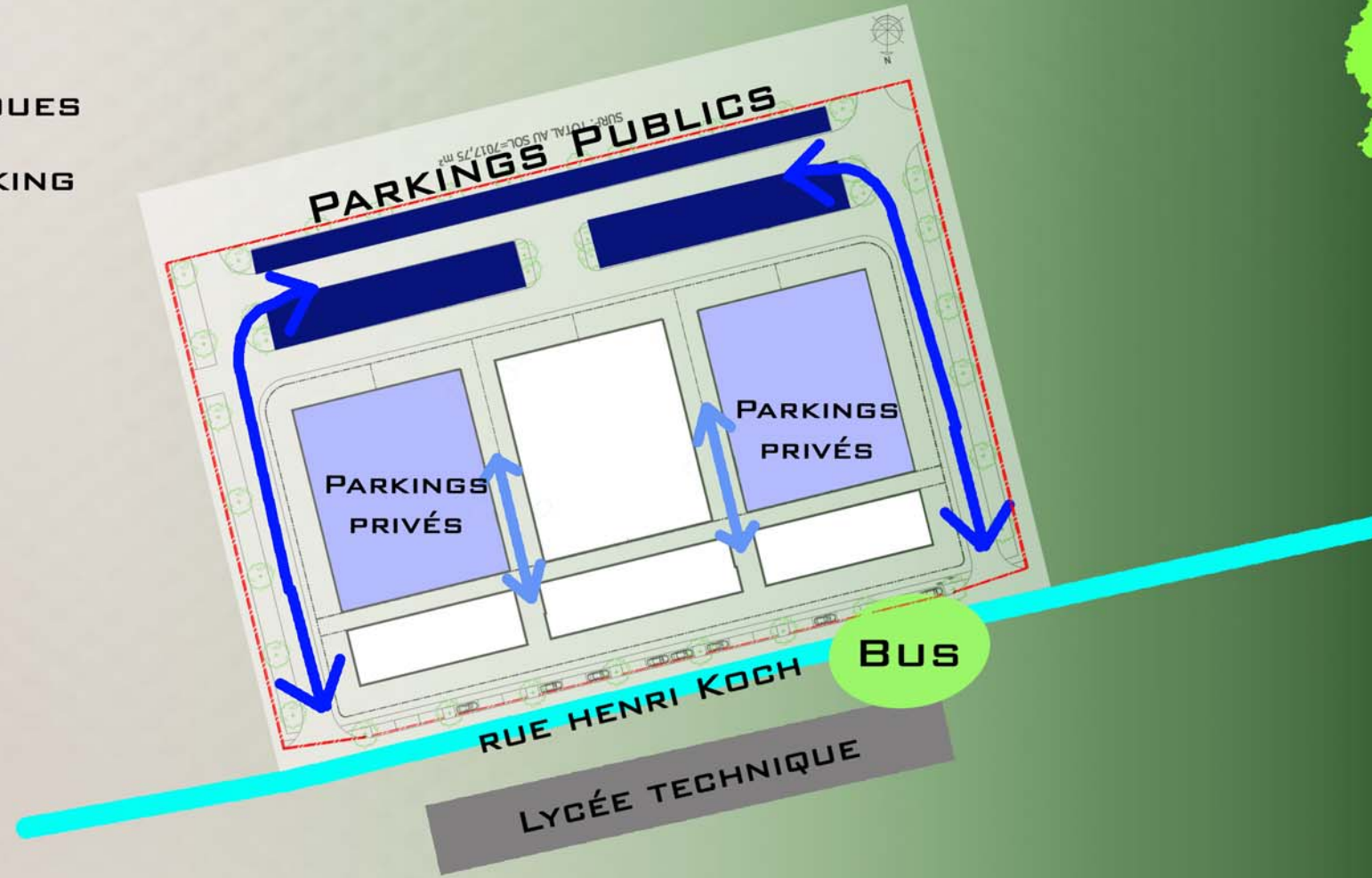
RÉSEAUX AUTOMOBILES ET CHEMIN DE FER NIVEAU DE LA VILLE



FLUX AUTOMOBILES




NIVEAU DU SITE

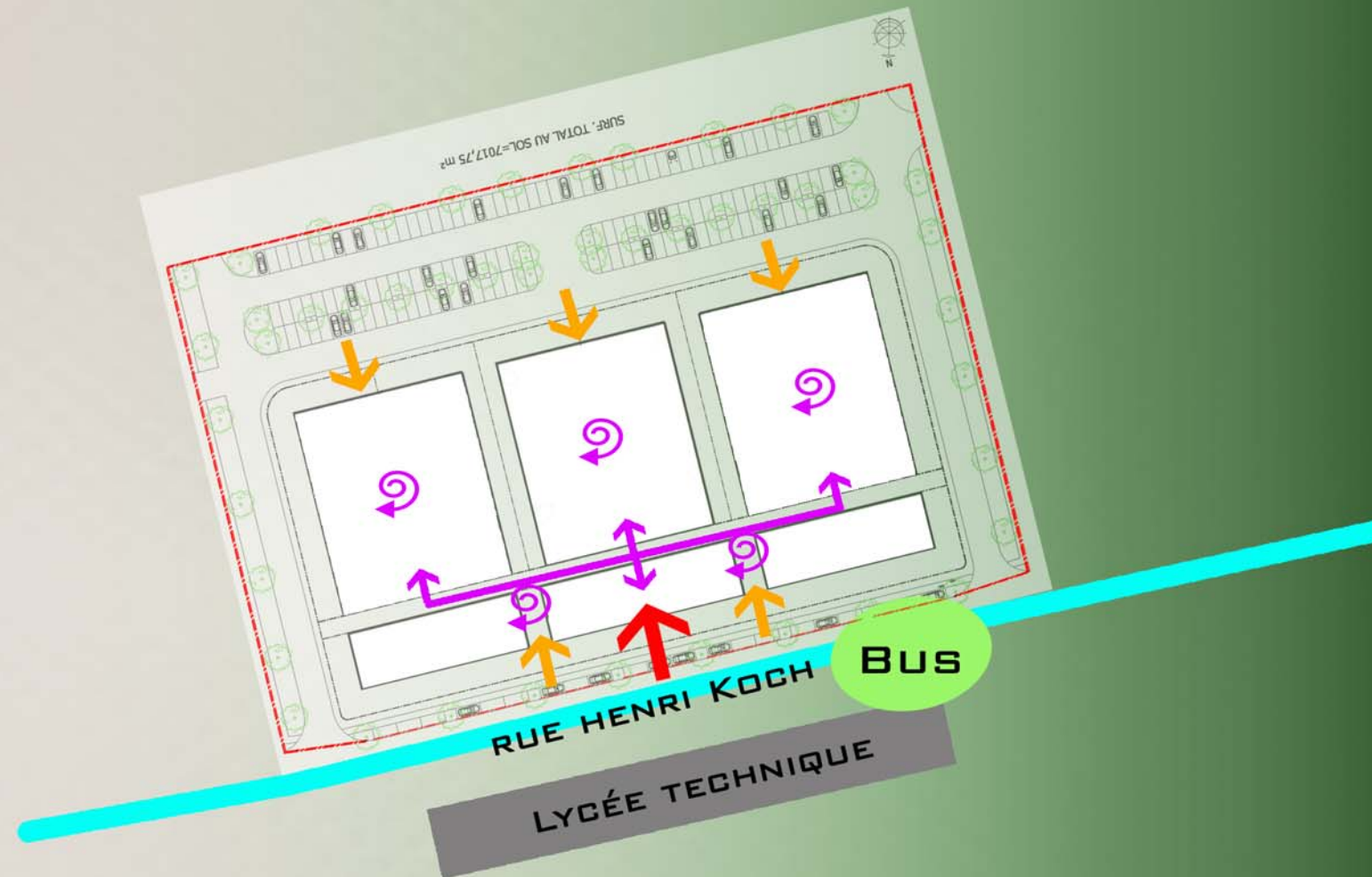
-  FLUX PRIMAIRE - VOIRIES PUBLIQUES
-  FLUX SECONDAIRE - ACCÈS PARKING

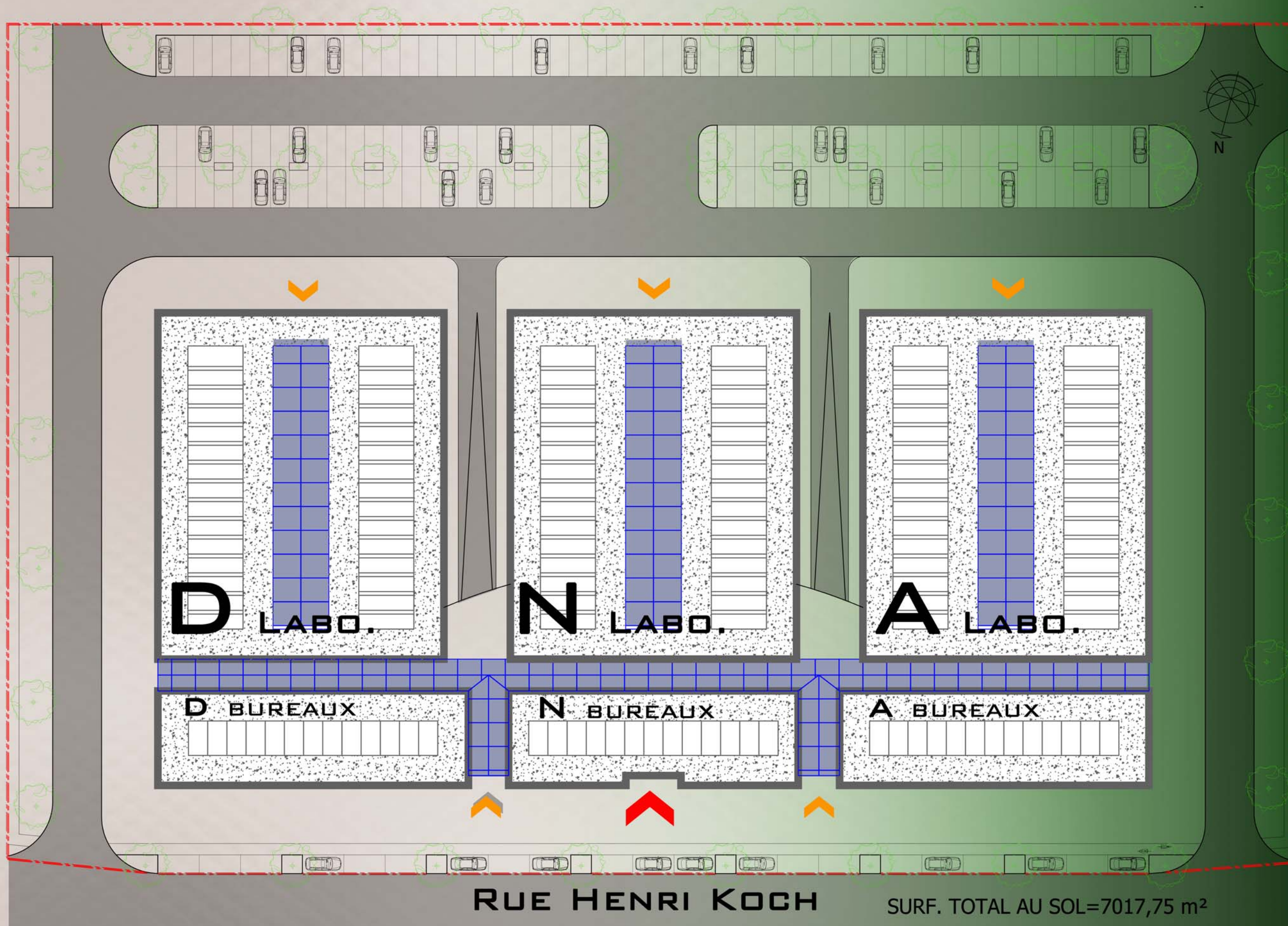


FLUX PIÉTONNIERS

NIVEAU DU SITE

-  FLUX PRIMAIRE
-  FLUX SECONDAIRE
-  FLUX INTERNE





RUE HENRI KOCH

SURF. TOTAL AU SOL=7017,75 m²

ENTRÉE PRINCIPALE 

ENTRÉE SECONDAIRE 

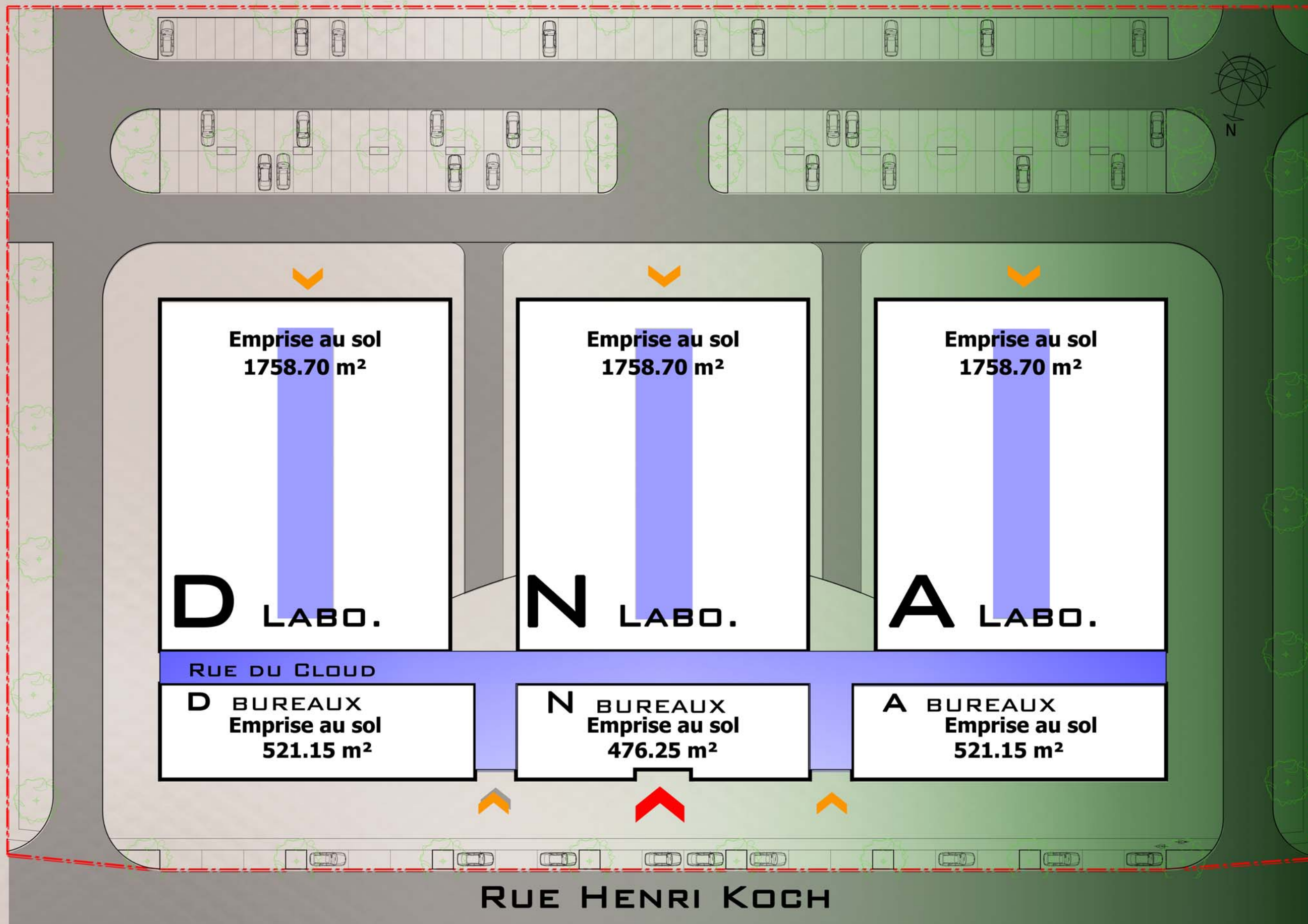
ESQUISSE DE PRINCIPE - SURFACE

HOUSE OF BIO-HEALTH

INNOVATION CLUSTER

05 AVRIL 2011





ENTRÉE PRINCIPALE  ENTRÉE SECONDAIRE  ZONES DE RENCONTRE 

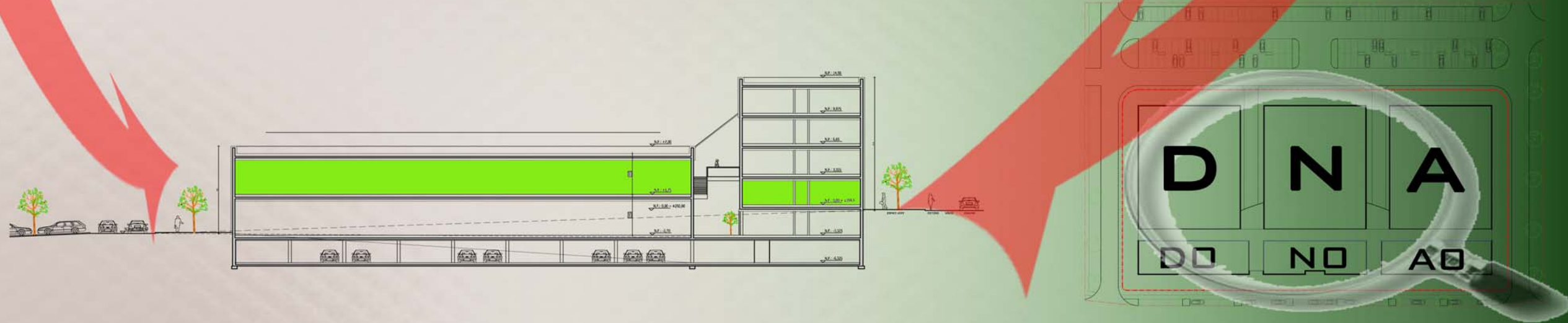
ESQUISSE DE PRINCIPE - SURFACE

HOUSE OF BIO-HEALTH

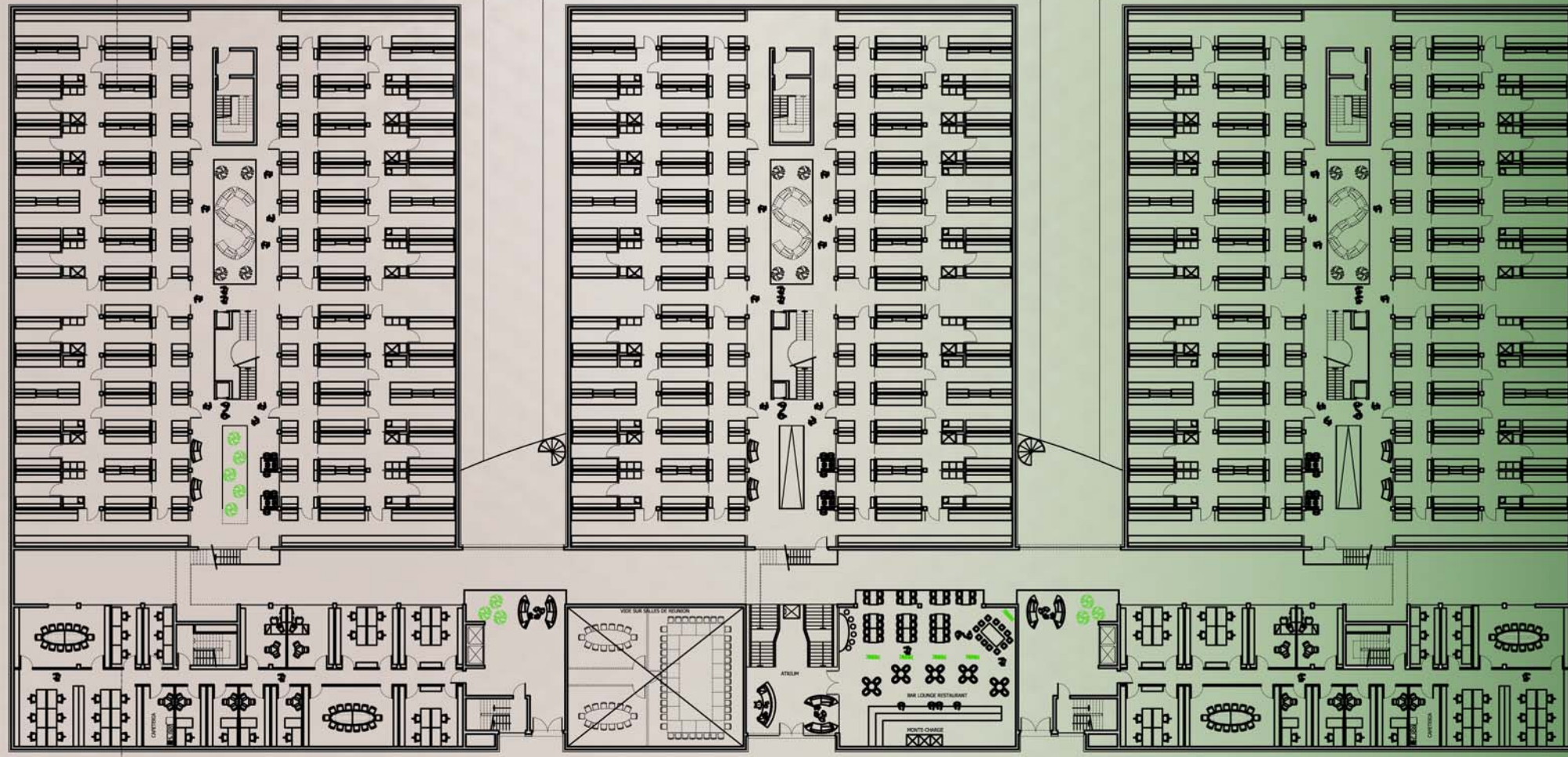
INNOVATION CLUSTER

05 AVRIL 2011





AMÉNAGEMENT TYPE
 VUE EN PLAN - REZ DE CHAUSSÉE - 1/500È



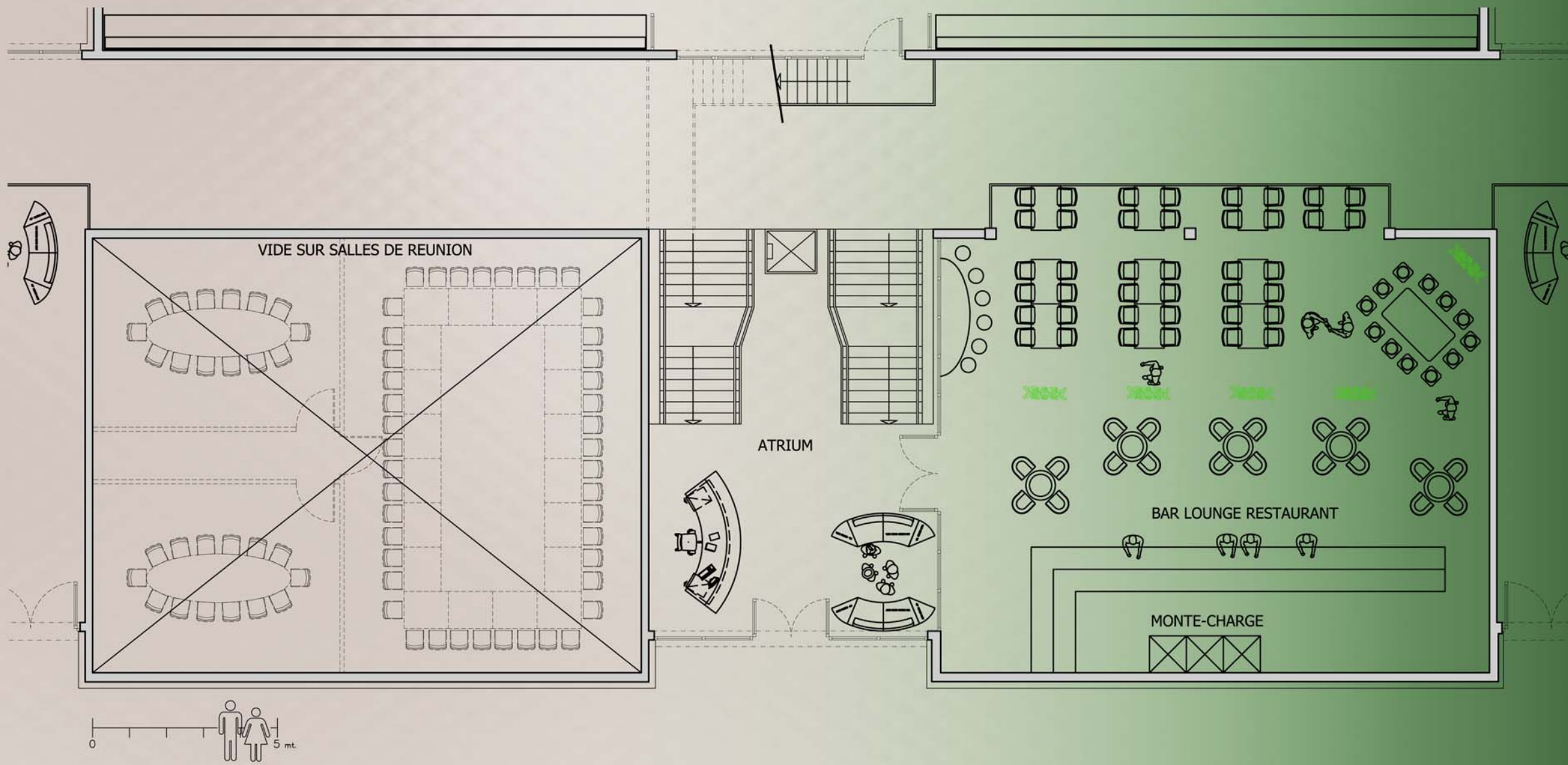
ESQUISSE DE PRINCIPE - VEP - REZ DE CHAUSSÉE

HOUSE OF BIOHEALTH

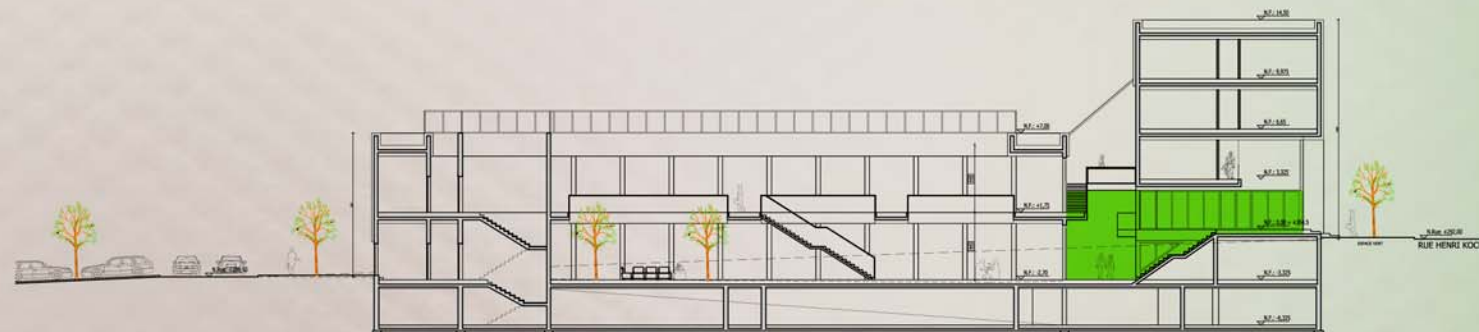
INNOVATION CLUSTER

05 AVRIL 2011





VUE EN PLAN - HALL D'ENTRÉE - 1/150È



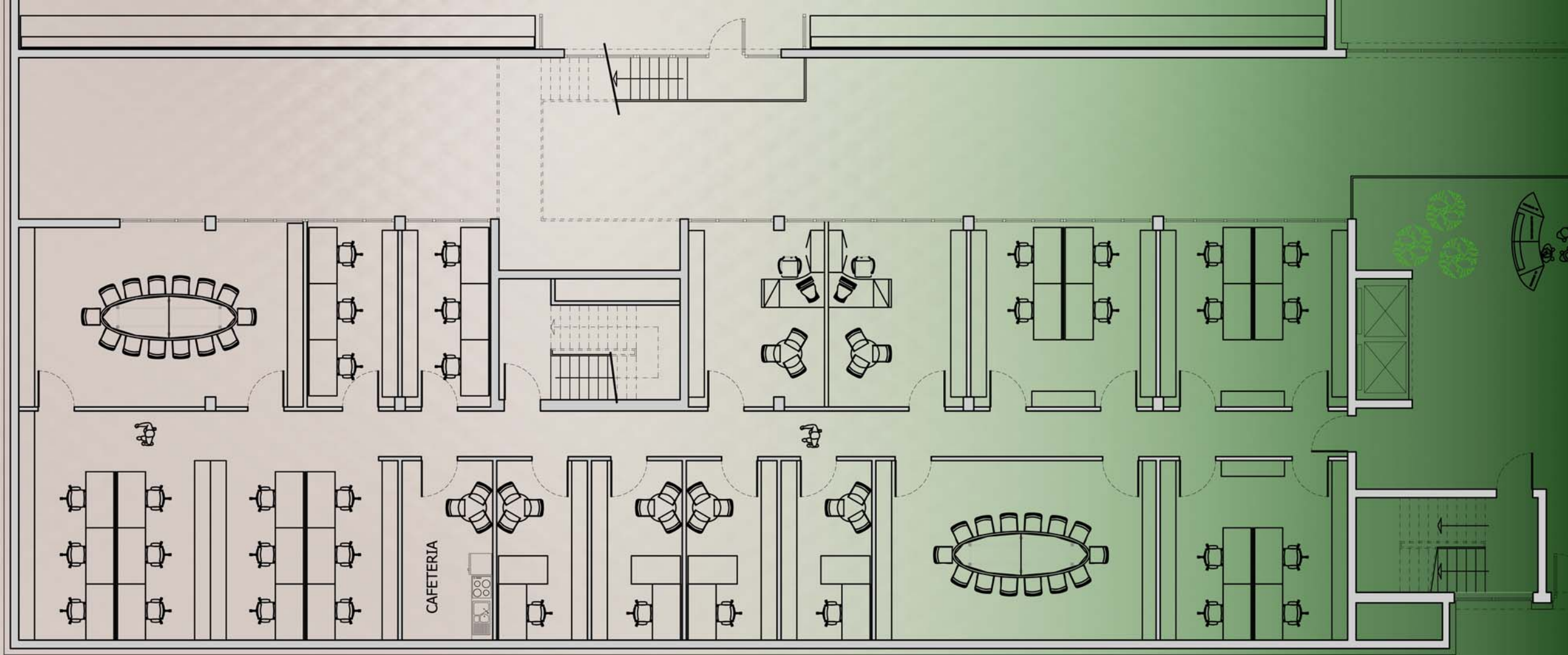
ESQUISSE DE PRINCIPE - VEP - HALL D'ENTÉE

HOUSE OF BIOHEALTH

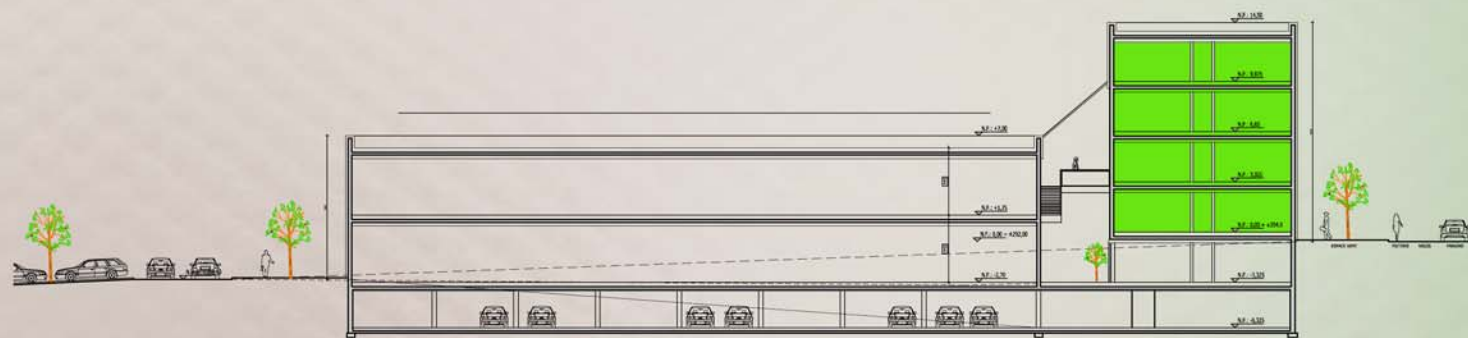
INNOVATION CLUSTER

05 AVRIL 2011





VUE EN PLAN - BUREAUX - ETAGE TYPE
1/150È



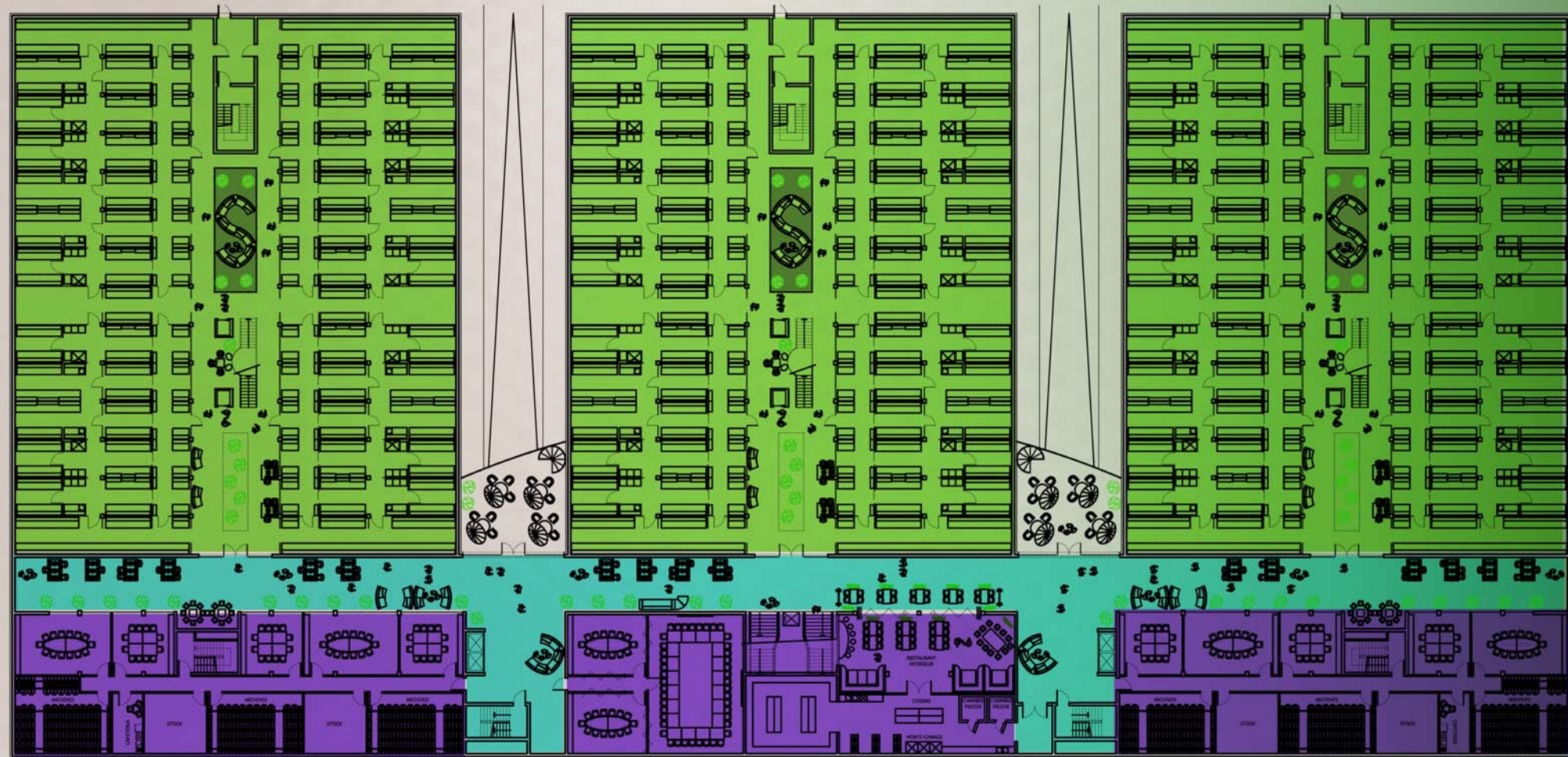
ESQUISSE DE PRINCIPE - VEP - ETAGE TYPE BUREAUX

HOUSE OF BIOHEALTH

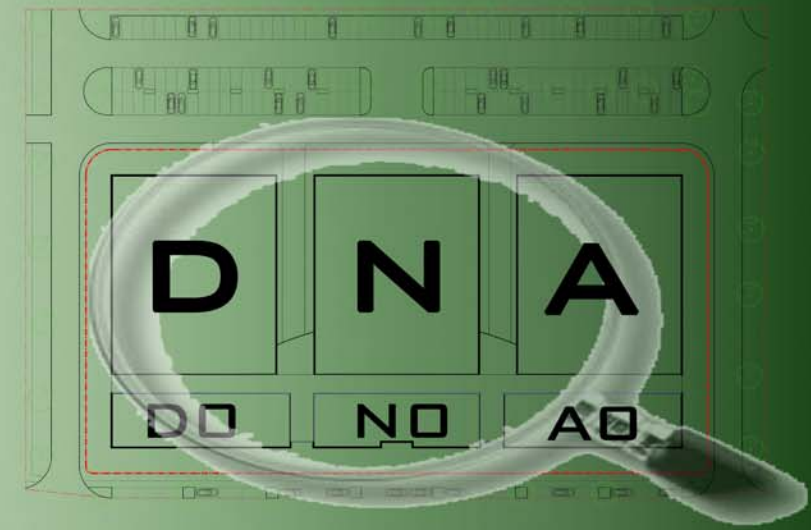
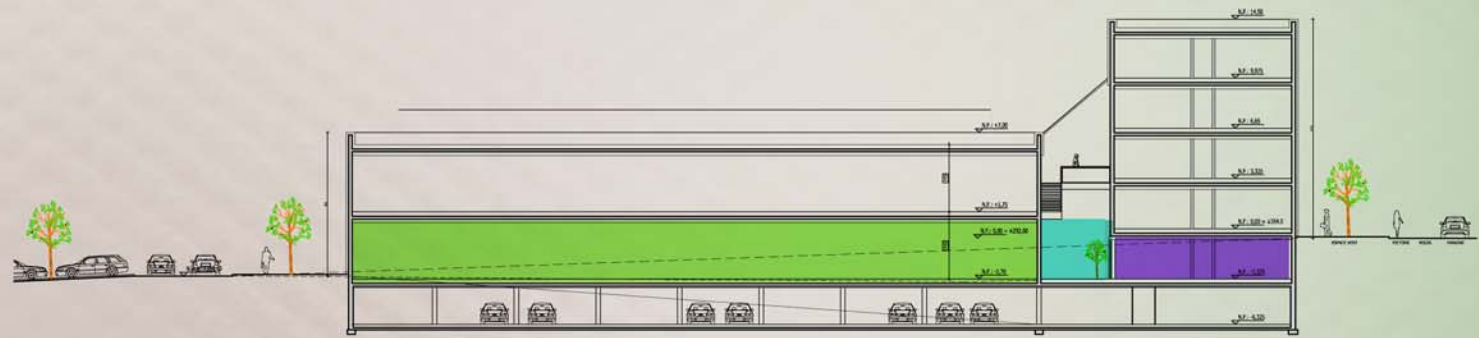
INNOVATION CLUSTER

05 AVRIL 2011





VUE EN PLAN - ENTRE-SOL - 1/500È



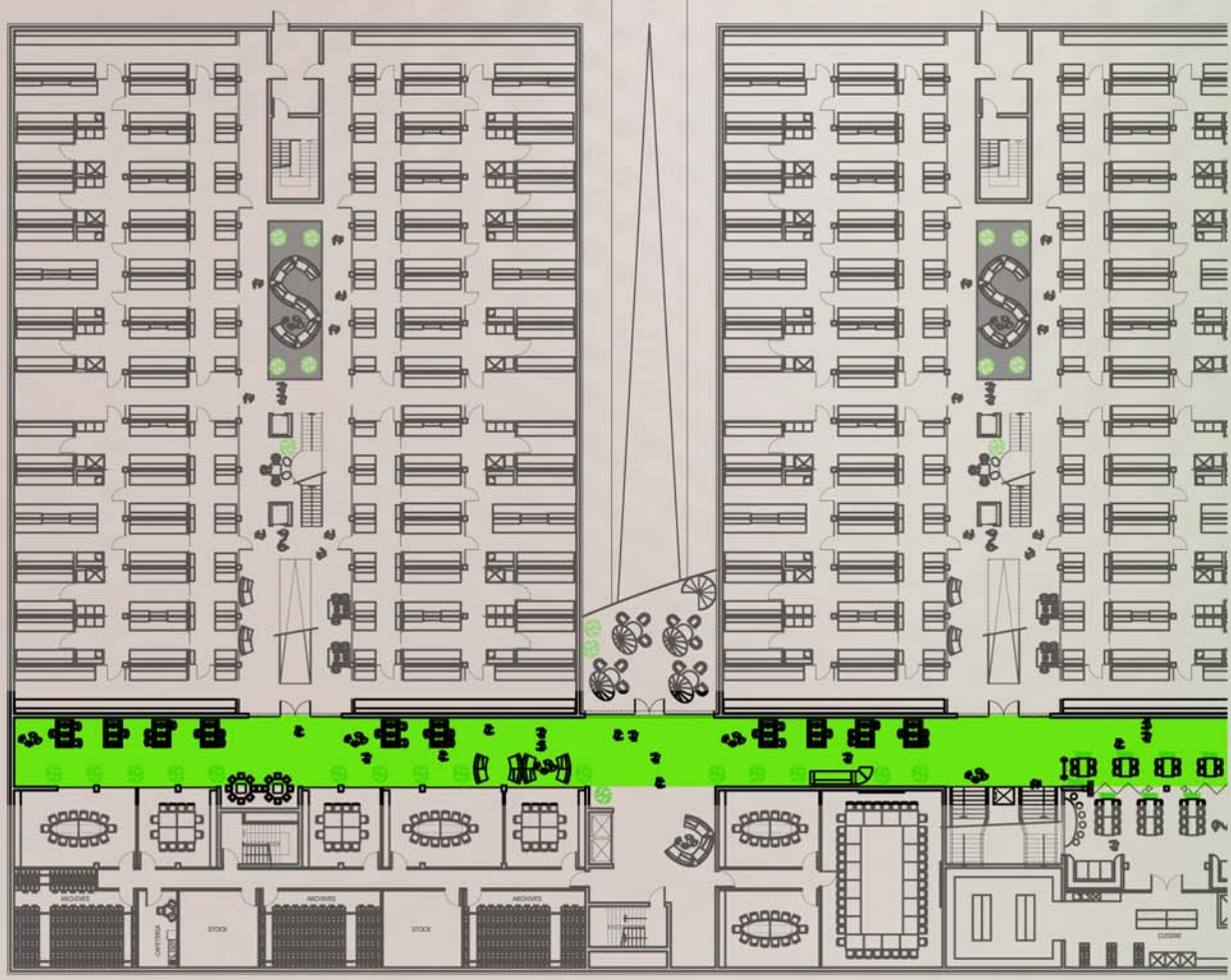
ESQUISSE DE PRINCIPE - VEP - ENTRE-SOL

HOUSE OF BIOHEALTH

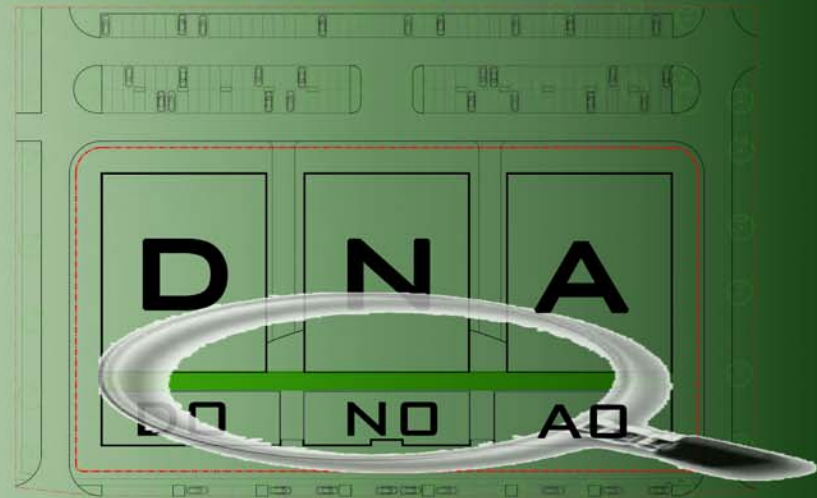
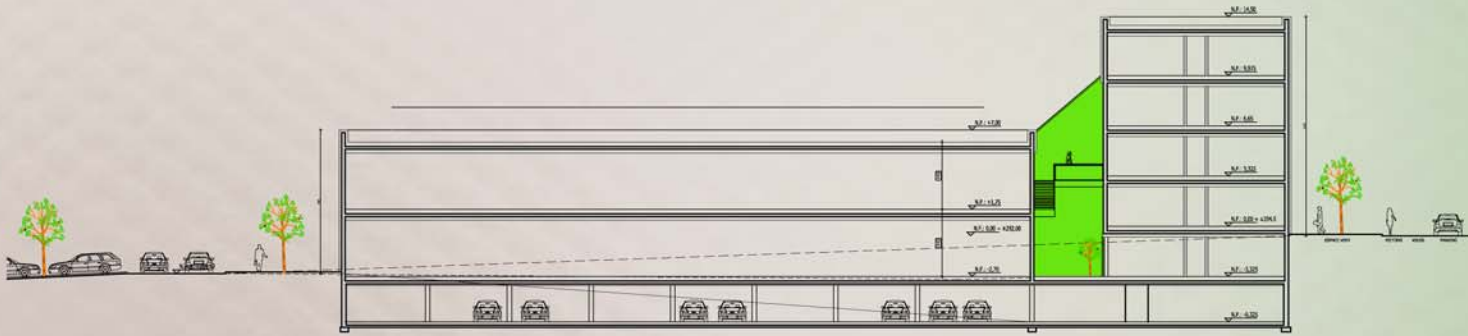
INNOVATION CLUSTER

15 FÉVRIER 2011





VUE EN PLAN - "LA RUE" - 1/500È



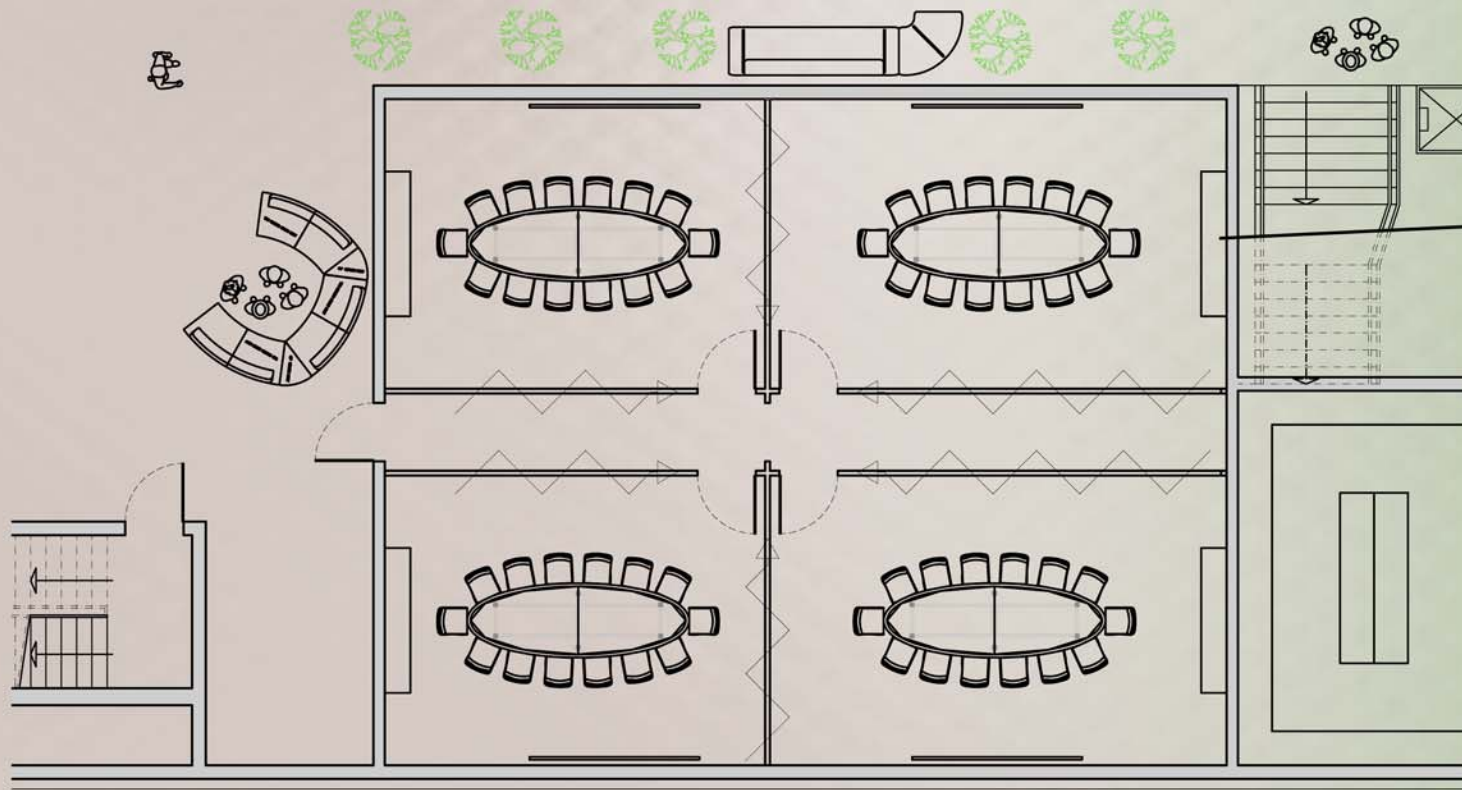
ESQUISSE DE PRINCIPE - "LA RUE"

HOUSE OF BIOHEALTH

INNOVATION CLUSTER

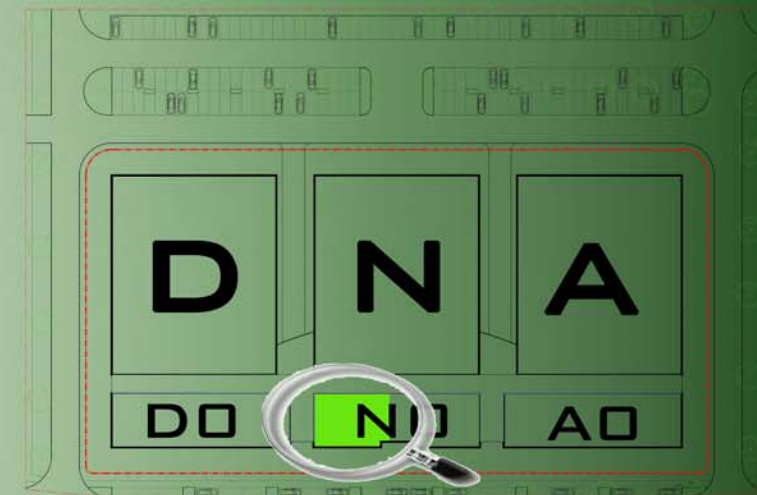
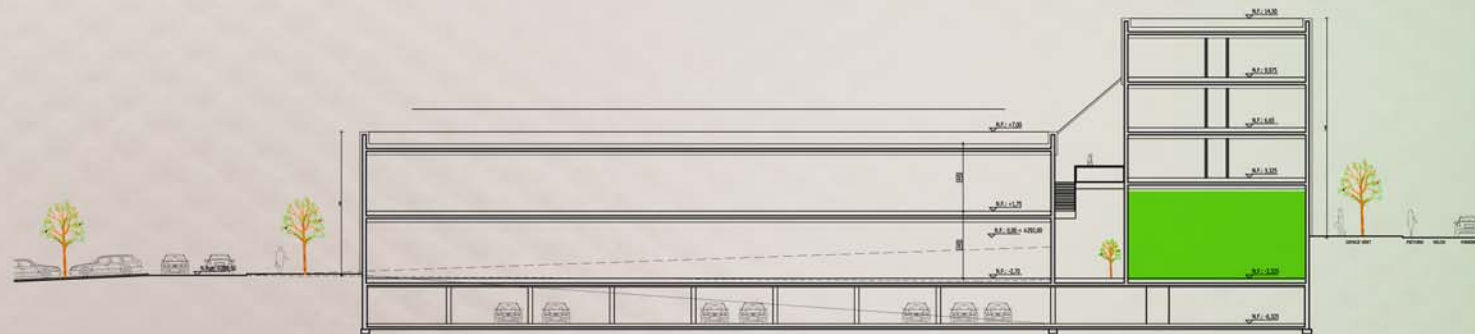
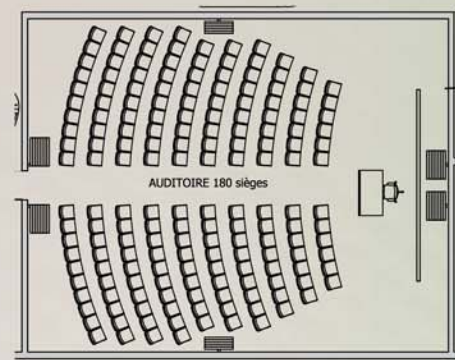
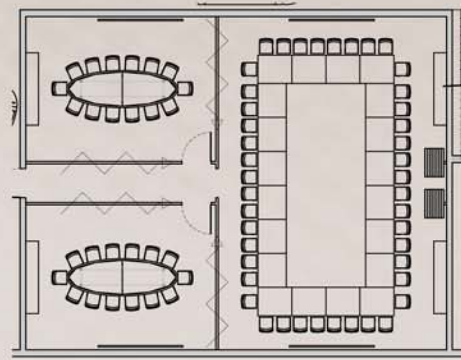
05 AVRIL 2011





VUE EN PLAN - ENTRE-SOL - SALLES DE RÉUNIONS 1/150È

DIVERSES POSSIBILITÉS D'AMÉNAGEMENTS DES CLOISONS AMOVIBLES



ESQUISSE DE PRINCIPE - VEP - SALLES RÉUNIONS

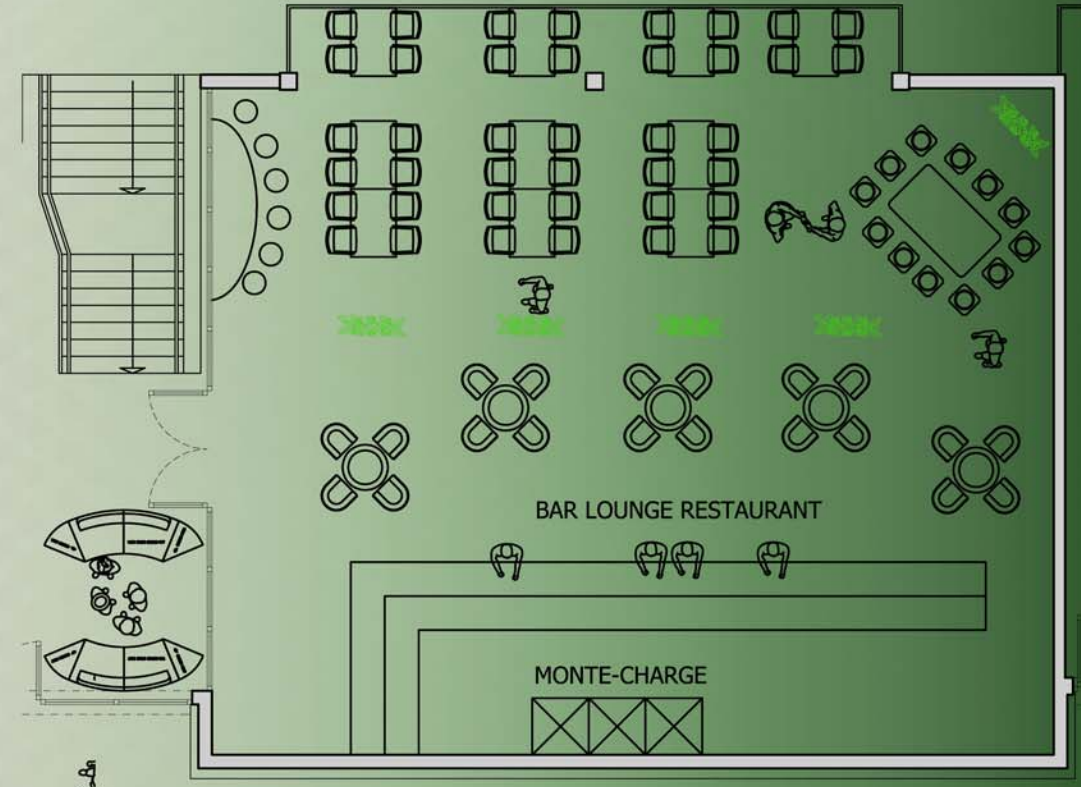
HOUSE OF BIOHEALTH

INNOVATION CLUSTER

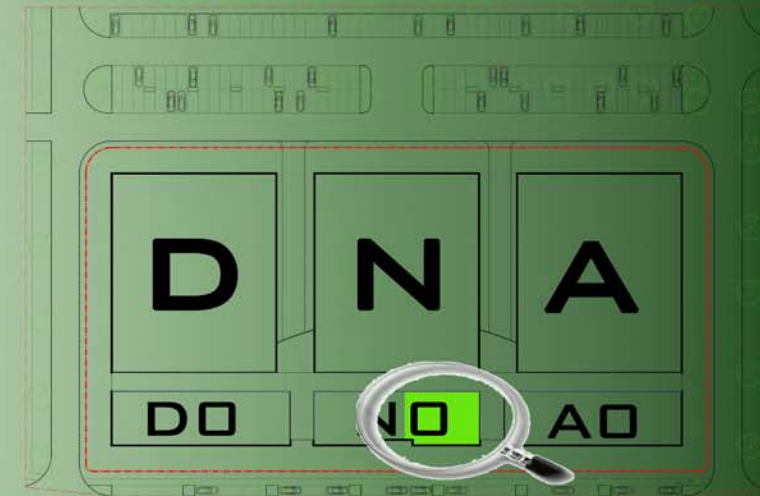
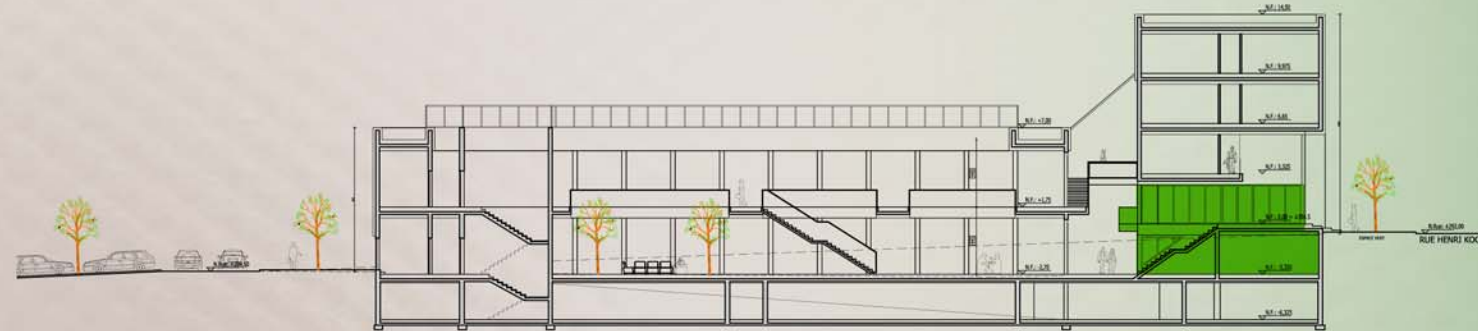
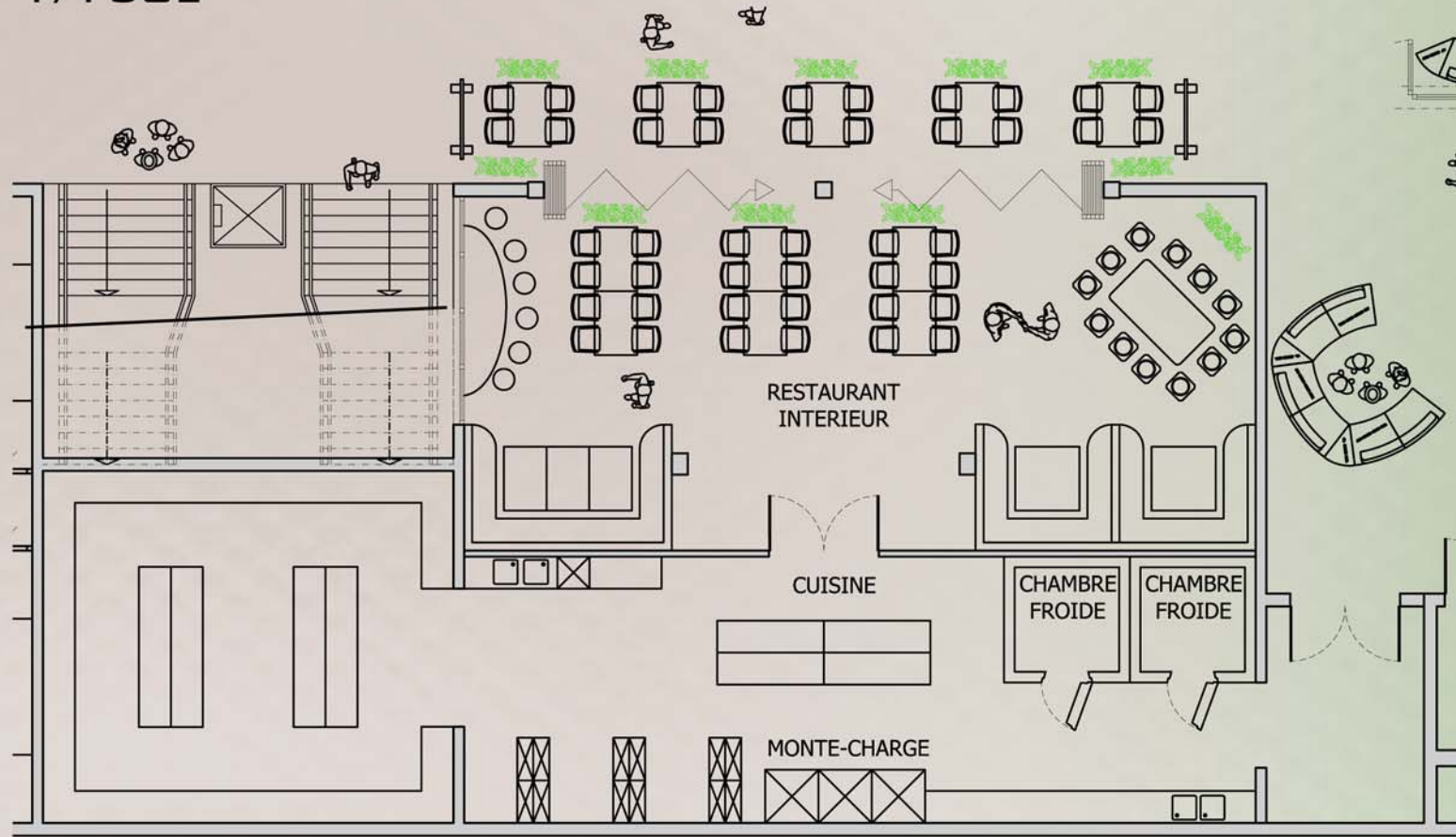
05 AVRIL 2011



VUE EN PLAN
 REZ DE CHAUSSÉE
 BAR LOUNGE
 1/150È



VUE EN PLAN - ENTRE-SOL - CUISINE ET RESTAURANT
 1/150È



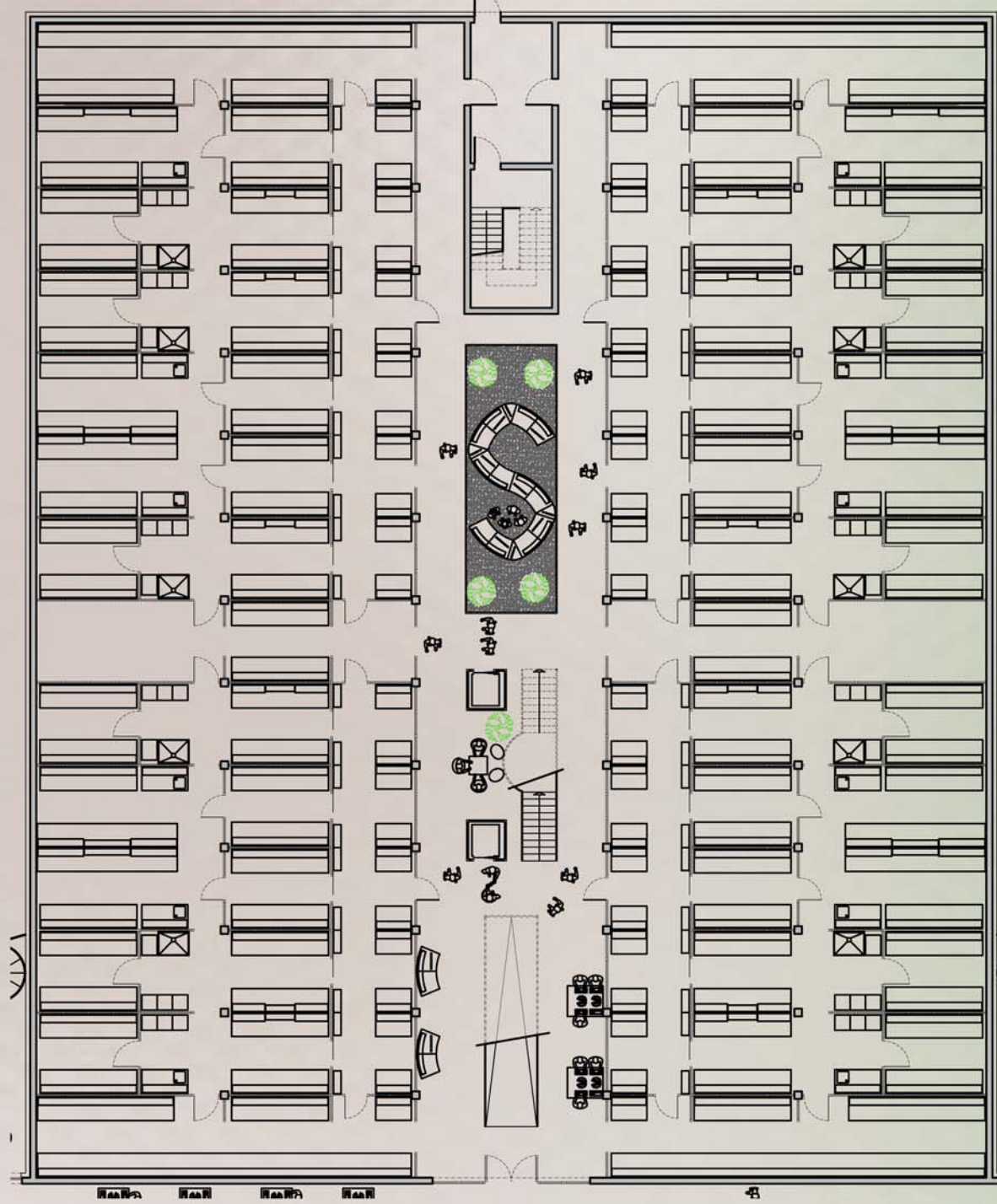
ESQUISSE DE PRINCIPE - VEP - RESTAURANT

HOUSE OF BIOHEALTH

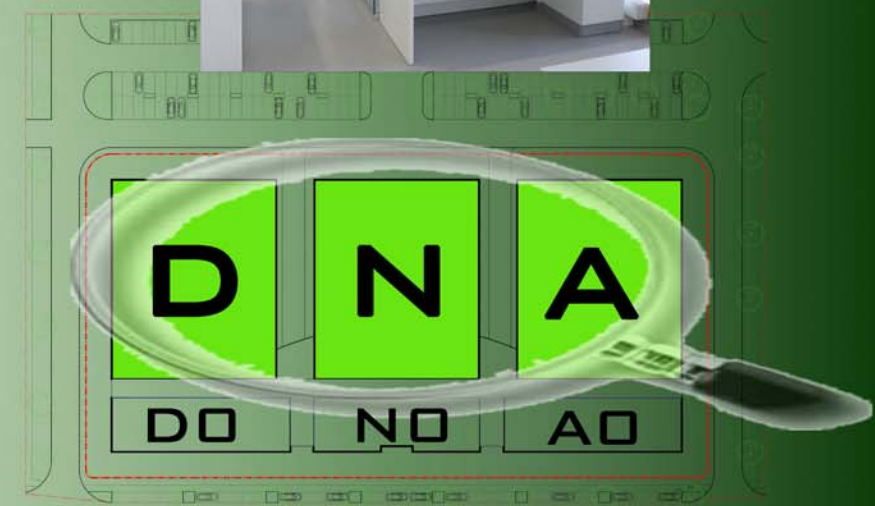
INNOVATION CLUSTER

05 AVRIL 2011





VUE EN PLAN - LABORATOIRES
 AMÉNAGEMENT TYPE - VARIANTE 1
 1/250È



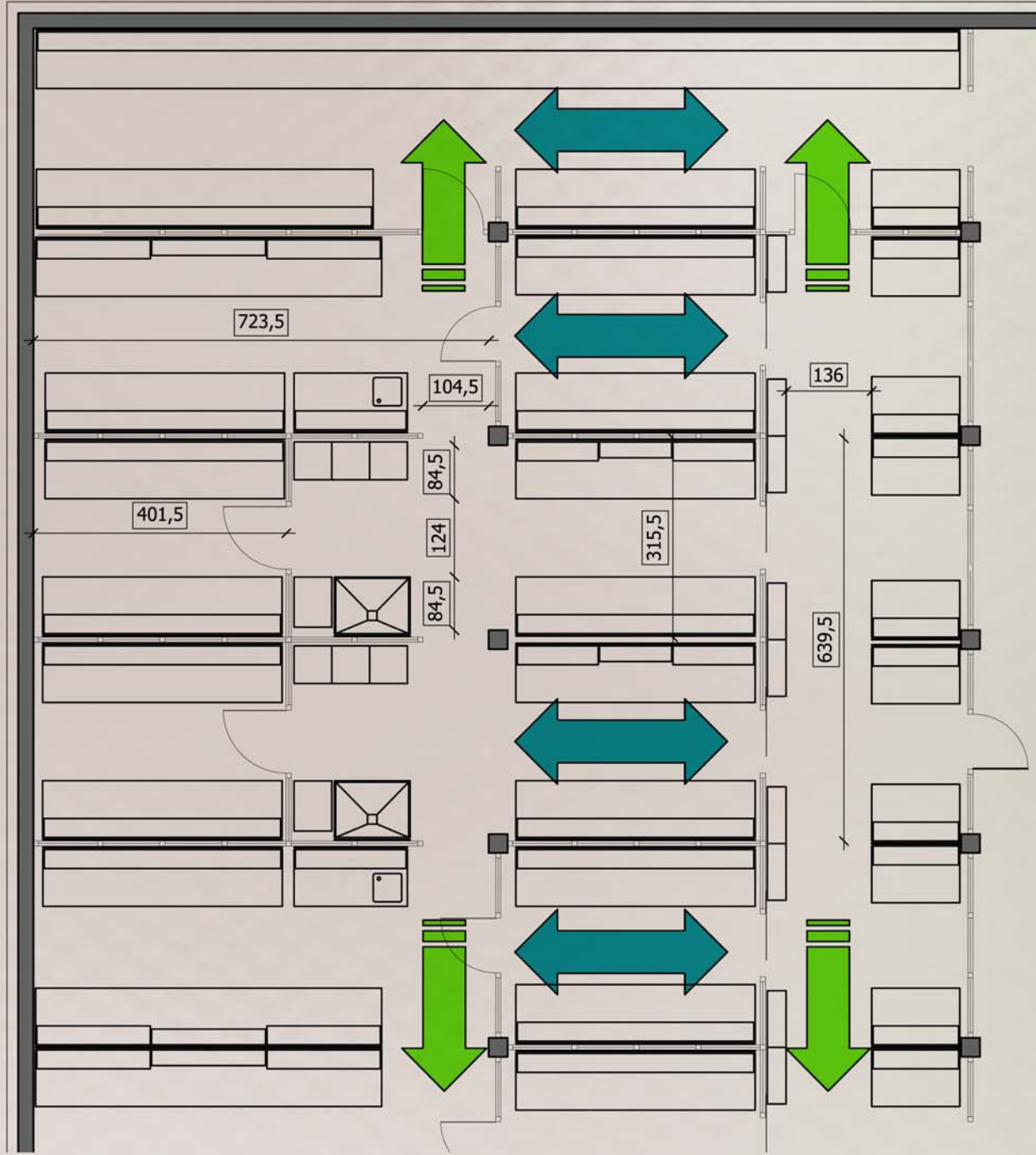
ESQUISSE DE PRINCIPE - VEP - LABORATOIRES

HOUSE OF BIOHEALTH

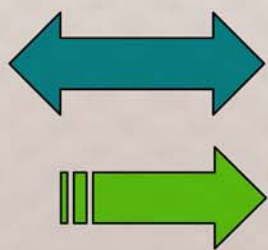
INNOVATION CLUSTER

05 AVRIL 2011



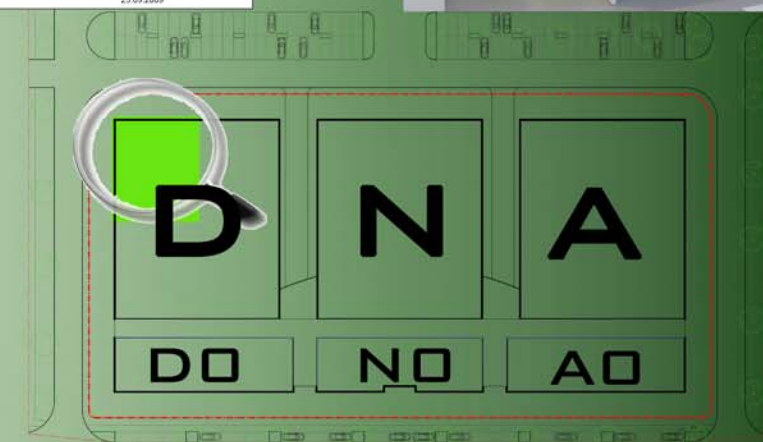


VUE EN PLAN - LABORATOIRES (EXTRAIT)
 VARIANTE 01
 1/100È



FLUX PRINCIPAL

FLUX SECONDAIRE



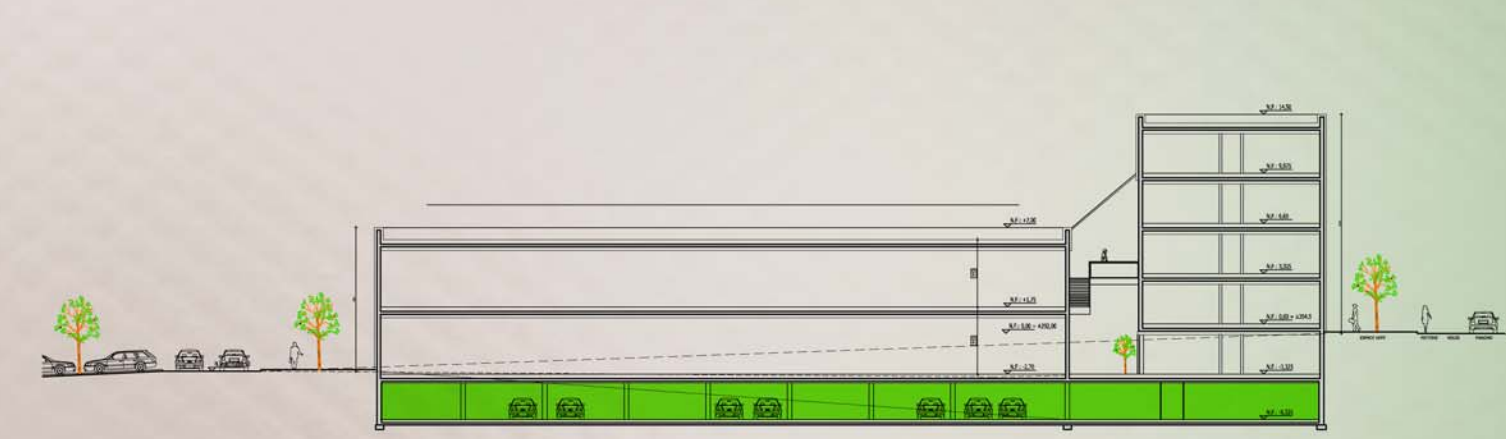
ESQUISSE DE PRINCIPE - VEP - LABORATOIRES

HOUSE OF BIOHEALTH

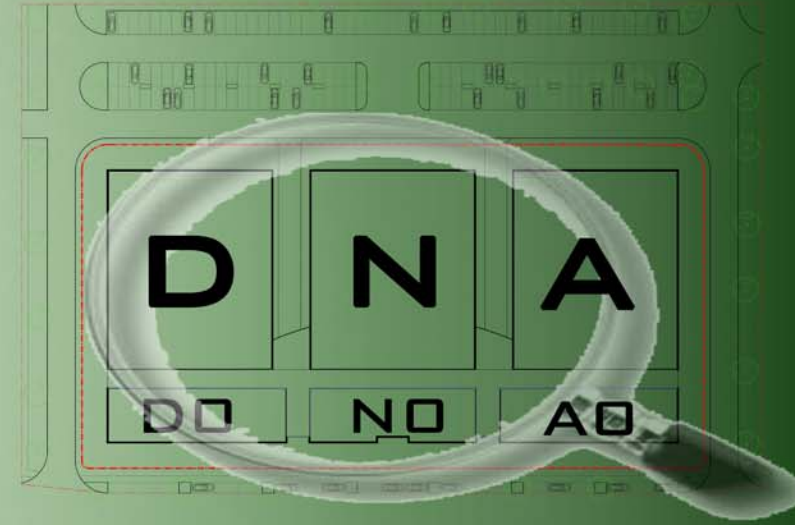
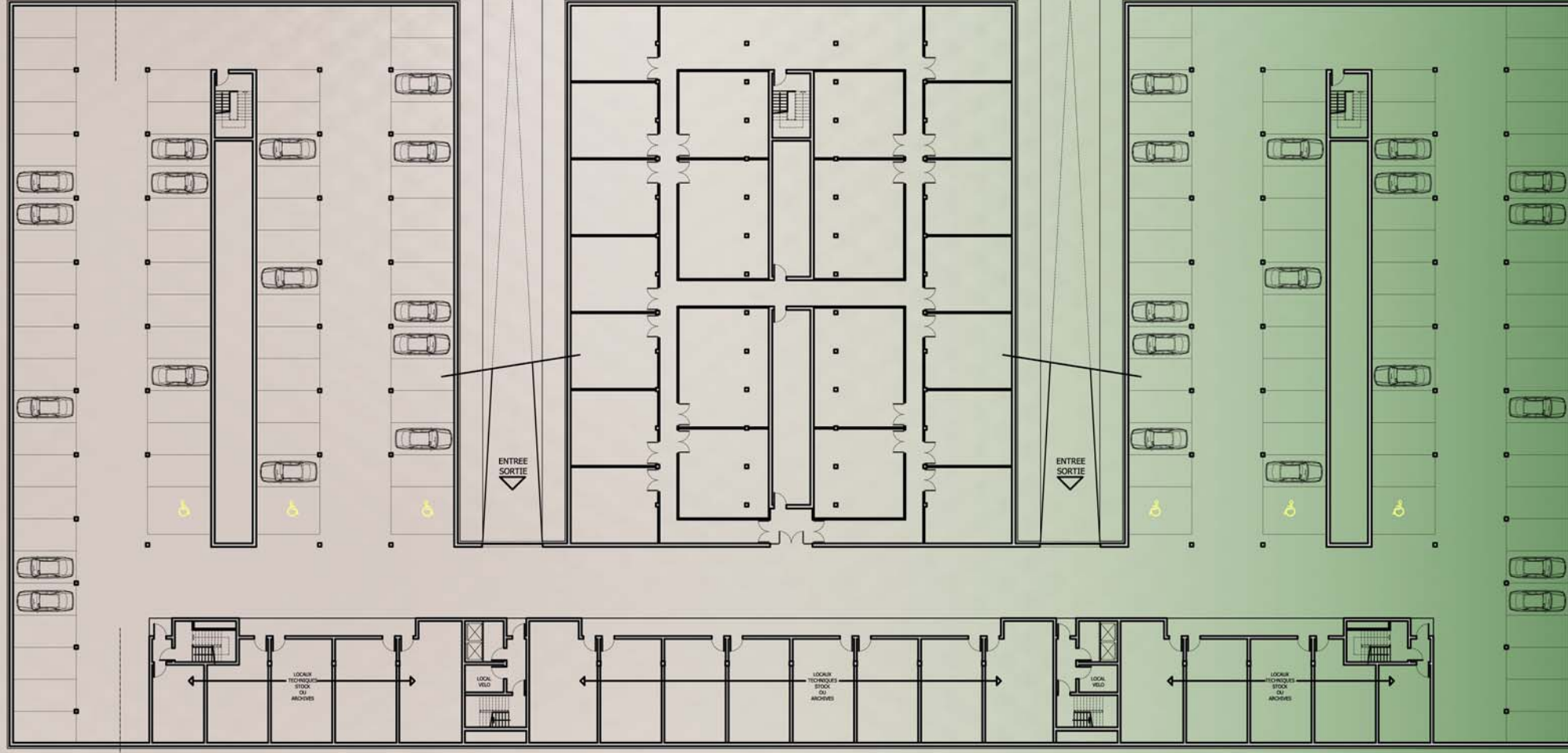
INNOVATION CLUSTER

05 AVRIL 2011





VUE EN PLAN - SOUS-SOL - 1/500È



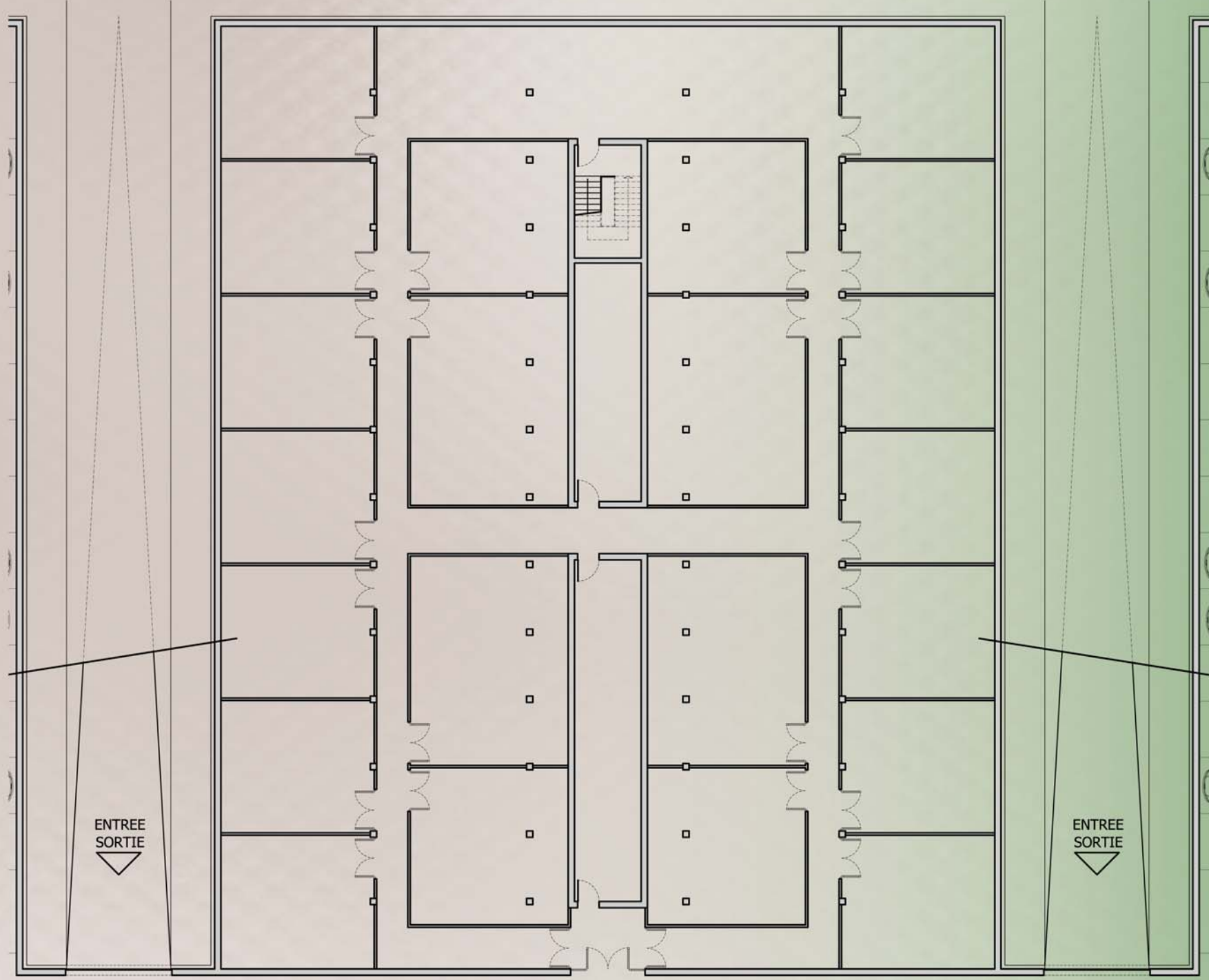
ESQUISSE DE PRINCIPE - VEP - SOUS-SOL

HOUSE OF BIOHEALTH

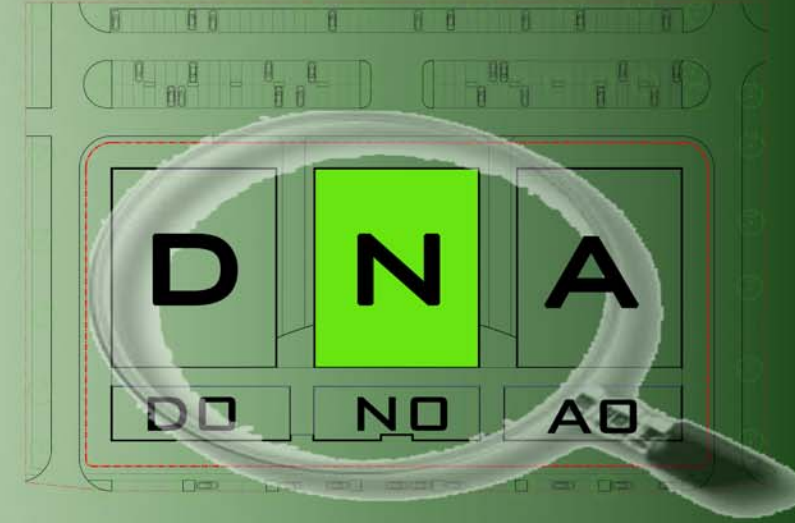
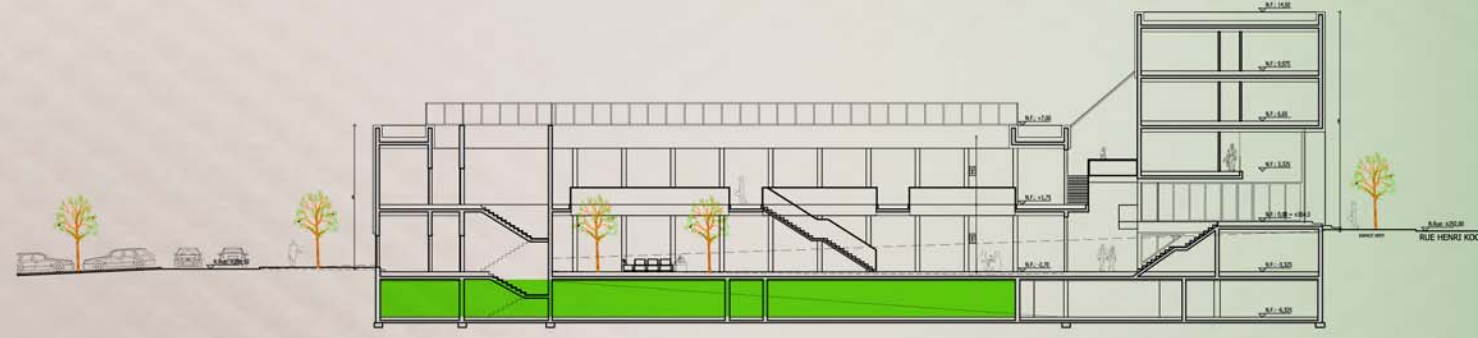
INNOVATION CLUSTER

05 AVRIL 2011





VUE EN PLAN - SOUS-SOL - ANIMALERIE
1/250è



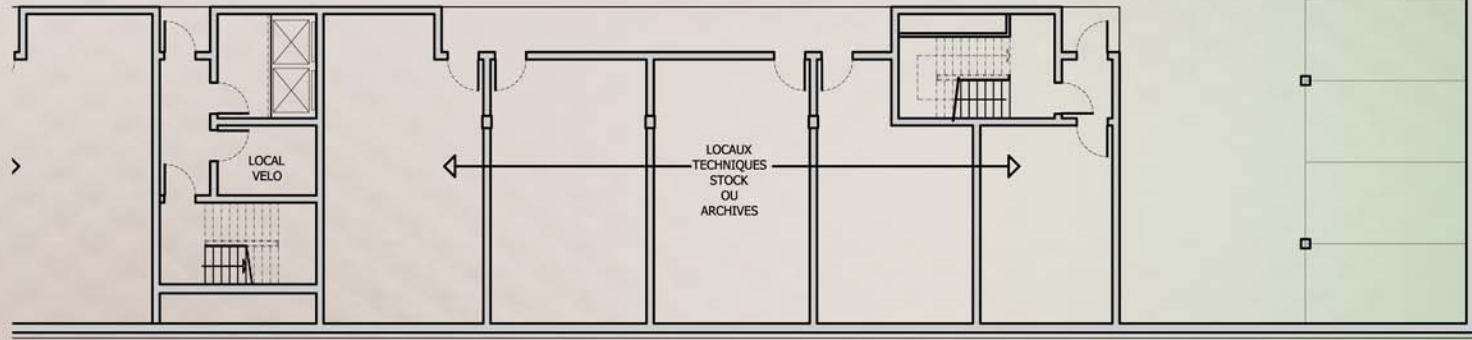
ESQUISSE DE PRINCIPE - VEP - SOUS-SOL

HOUSE OF BIOHEALTH

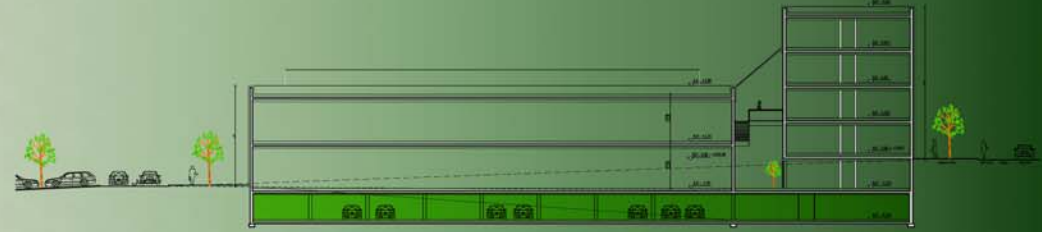
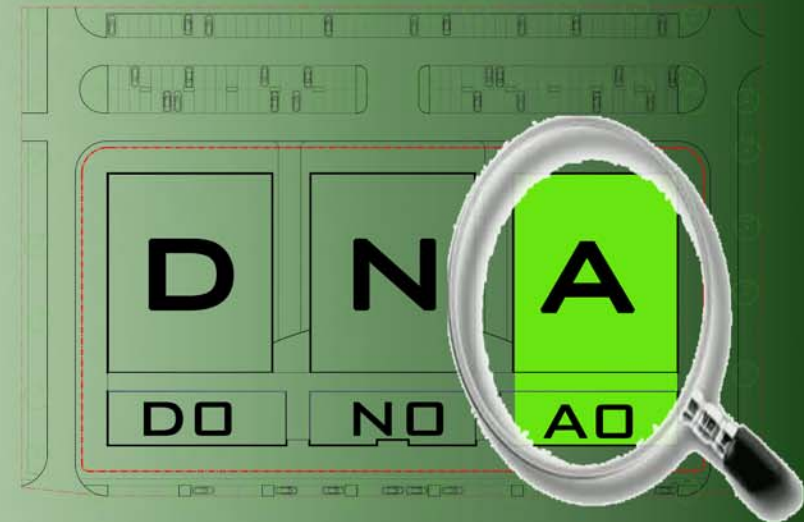
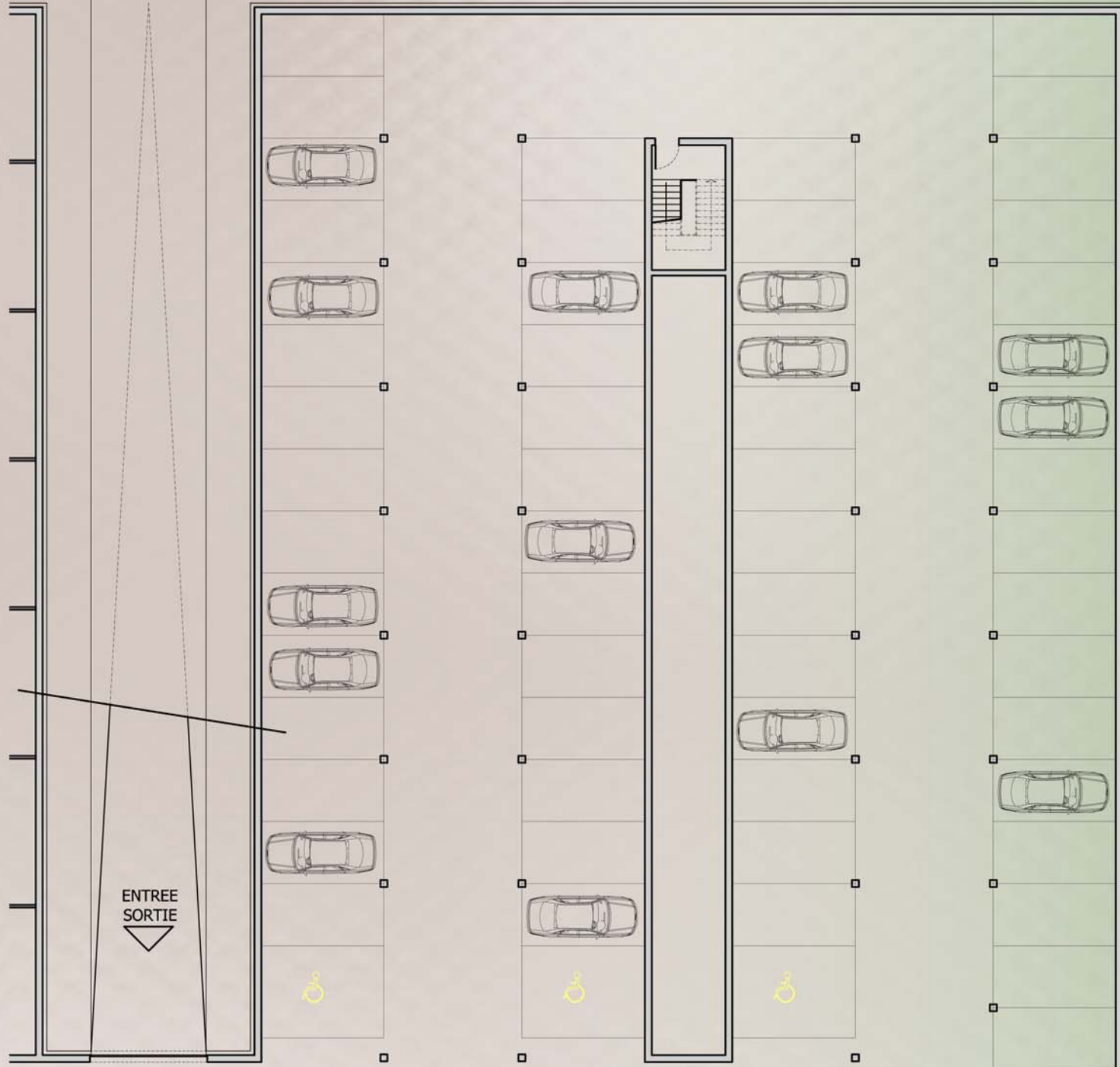
INNOVATION CLUSTER

05 AVRIL 2011





VUE EN PLAN - SOUS-SOL - PARKING
1/250È



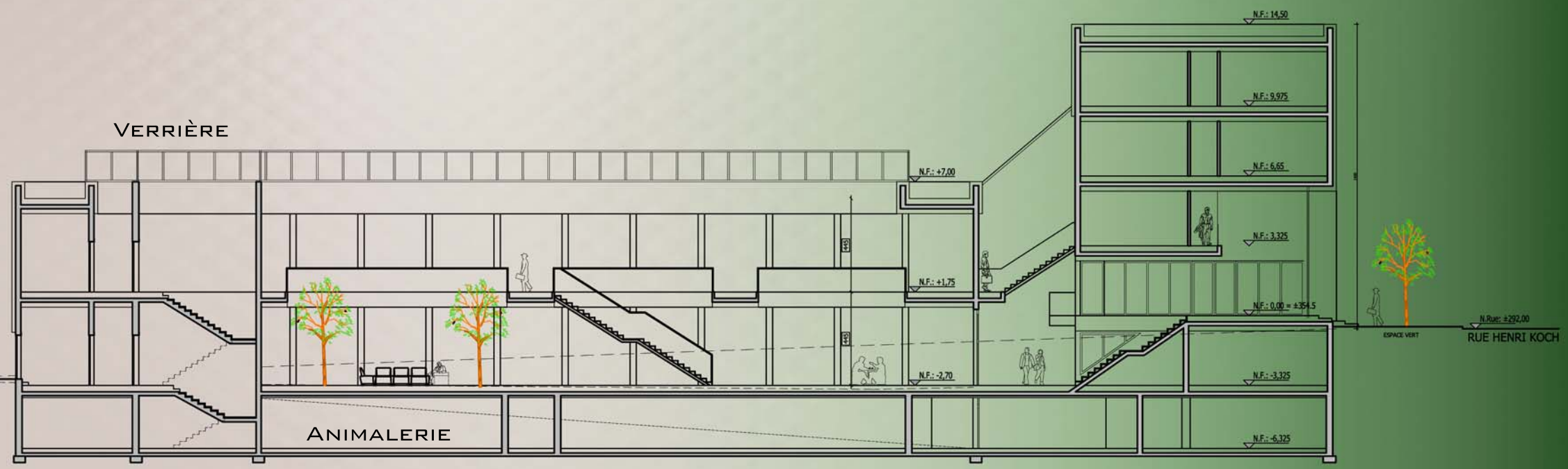
ESQUISSE DE PRINCIPE - VEP - SOUS-SOL

HOUSE OF BIOHEALTH

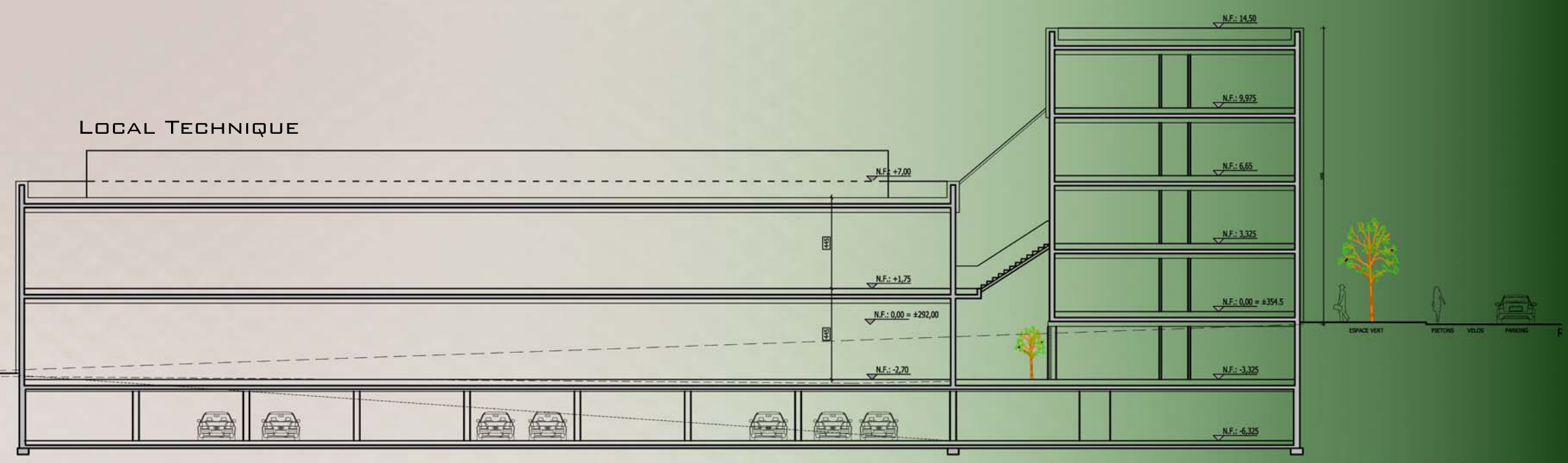
INNOVATION CLUSTER

05 AVRIL 2011

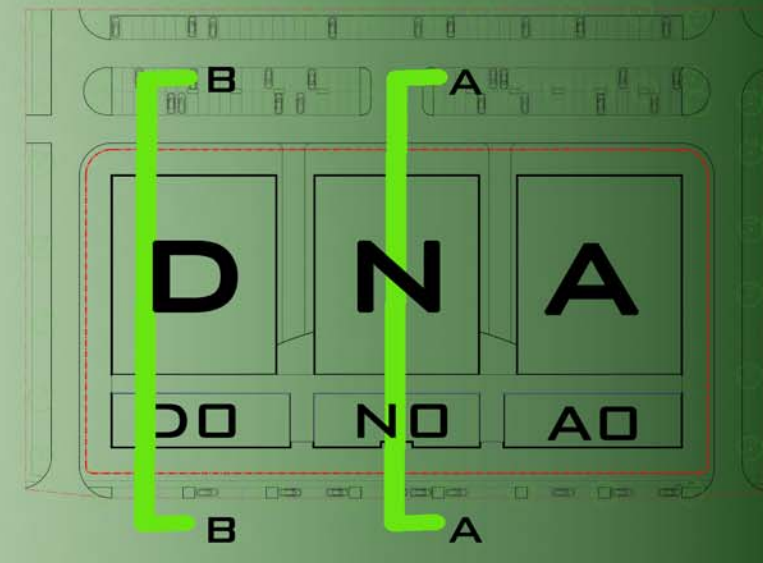




COUPE AA
1/150È



COUPE BB
1/150È



ESQUISSE DE PRINCIPE - COUPES

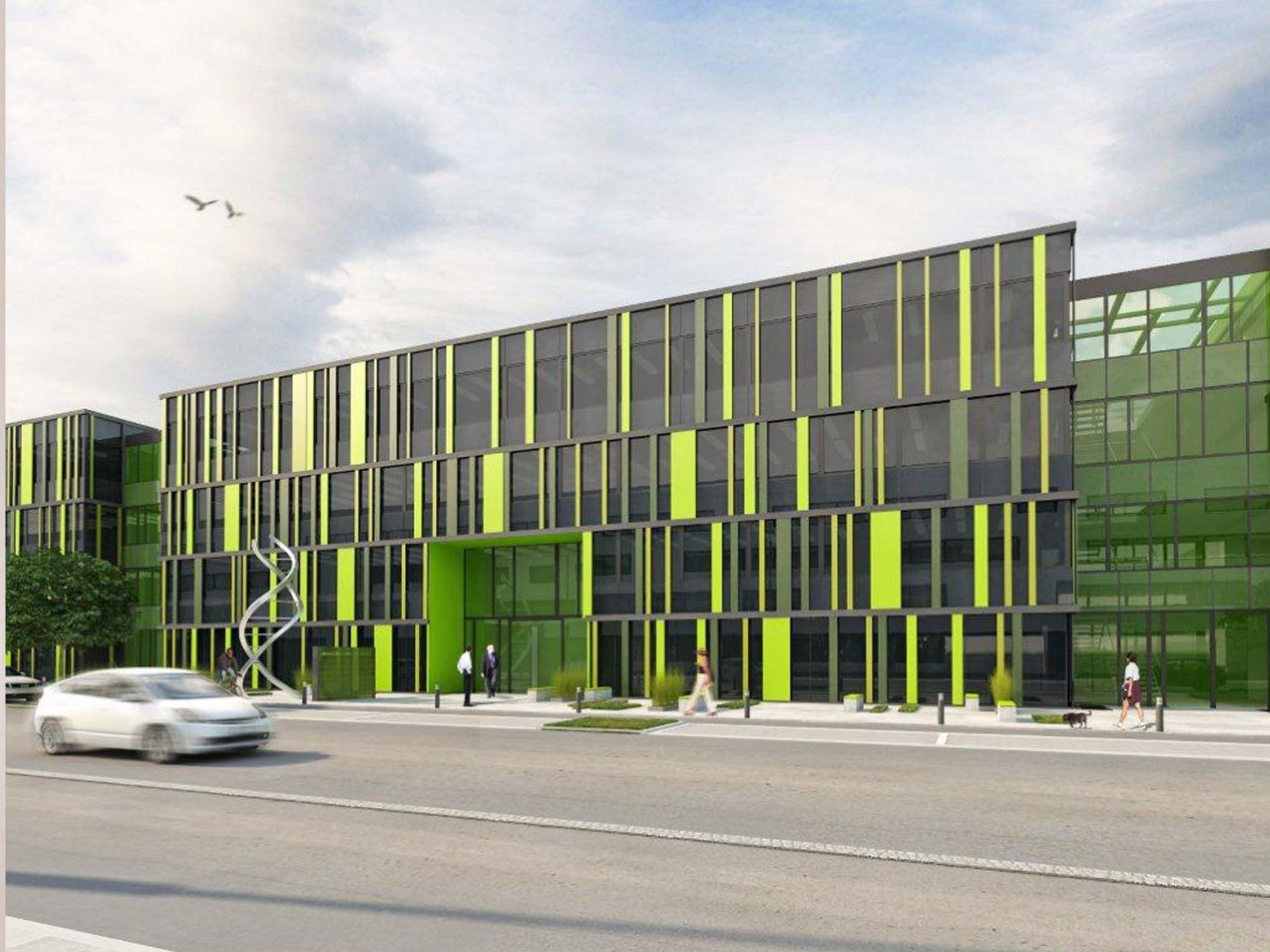
HOUSE OF BIOHEALTH

INNOVATION CLUSTER

05 AVRIL 2011



FAÇADE ENTRÉE PRINCIPALE



ESQUISSE DE PRINCIPE -3D

HOUSE OF BIOHEALTH

INNOVATION CLUSTER

05 AVRIL 2011





ESQUISSE DE PRINCIPE -3D

HOUSE OF BIOHEALTH

INNOVATION CLUSTER



05 AVRIL 2011



ESQUISSE DE PRINCIPE -3D

HOUSE OF BIOHEALTH

INNOVATION CLUSTER



05 AVRIL 2011

HOUSE OF BIOHEALTH

05 AVRIL 2011

INNOVATION
CLUSTER



PRO
ject

PROgroup GEIE
Consulting Engineers
2, rue d'Arlon
L-8399 ECOPARC WINDHOF

PROject s.a.
Tél.: 26.107.007
Fax.: 26.107.008
info@PROgroup.eu
www.PROgroup.eu

MAITRE DE L'OUVRAGE
INNOVATION CLUSTER

PROJET
HOUSE OF BIO HEALTH

N° PROJET 91219	DATE 12/02/2011	TITRE
DESSINE PAR CCT	ECHELLE	PLAN
VERIFIE PAR GBD	FORMAT PAPIER A3	N° PLAN



PROgroup GEIE - Consulting Engineers
CSD sa - PROject sa - PROgéna sa - PROject Belgium sprl
PROgroup France SAS - PROnewtech sa
info@PROgroup.eu www.PROgroup.eu

